

- **MXE-204P**
MXE-205P

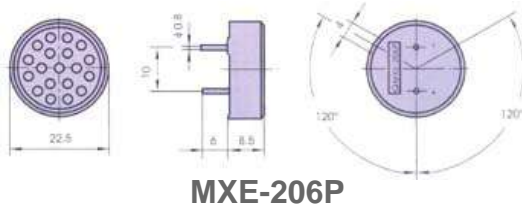
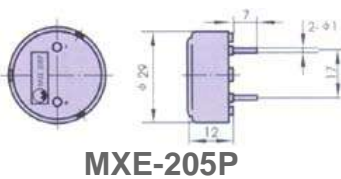
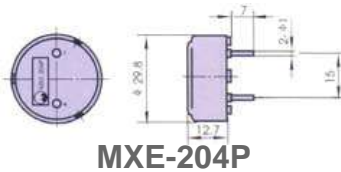
- **MXE-206P**



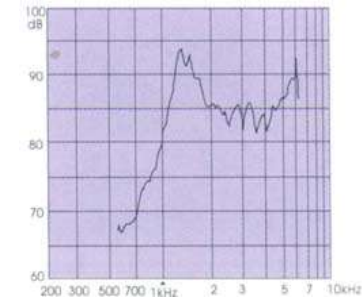
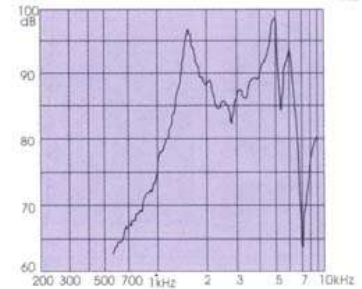
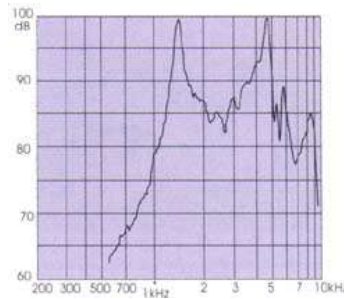
FEATURES:

- Printed circuit mounting
- 8 ohm standard impedance
- Wave solderable

DIMENSIONS: (Unit: mm)



CHARACTERISTICS:



ELECTRICAL SPECIFICATIONS :

Model No.	MXE-204P(205P)	MXE-206P
Min. Sound Pressure Level (dB)	84/1400(1500) ± 200Hz/1.1V _{RMS} Sine Wave /10cm	73/1500 ± 200Hz/0.8V _{RMS} Sine Wave /10cm
Rated Power (W)	0.15	0.08
Max. Power (W)	0.3	0.15
Operating Frequency (Hz)	700 ~ 5000	500 ~ 4000
Resonant Frequency (Hz)	1400(1500) ± 200	1500 ± 200
Rated Impedance (Ω)	8	
Operating Temperature (°C)	-20 ~ +70	
Weight (g)	9.2	3.2
Case Material/Colour	PC/Black	

PACKING INFORMATION:

Packing:	1000 pcs per export carton	2160 pcs per export carton
Carton Size:	47 X 30.5 X 25cm	47 X 30.5 X 19cm
G. Weight:	11.0 kgs	8.5 kgs
N. Weight:	9.0 kgs	7.0 kgs