

SPECIFICATION

受 控

Customer :

Applied To :

Product Name : SPEAKER




Model Name : KPB45x33-2-7050

Drawing No. : KFC7050

Signature of Appronal

--

Signature of KEPO

Approved by	Checkde by	Issued by	Date
			



宁波凯普电子有限公司

Ningbo Kepo Electronics Co.,Ltd.

宁波东钱湖镇东钱湖工业区宝源路 25 号

TEL:+86-574-88370330 FAX:+86-574-88370329

No.25 Baoyuan road Dongqian Lake, Industry Area, Dongqian town,Ningbo City,

China(Post Code:315121)

Sales@chinaacoustic.com www.chinaacoustic.com

Specification for Speaker	Page	2/9
	Revision No.	1.1
Model No. : KPB45x33-2-7050	Drawing No.	KFC7050

CONTENTS

1. Scope
2. General
3. Electrical and Acoustic Characteristics.
4. Reliability Test
5. Measurement Block Diagram & Response curve
6. Structure
7. Dimensions
8. Packing
9. Revision

Specification for Speaker

Page

3/9

Revision No.

1.1

Model No. : KPB45x33-2-7050

Drawing No.

KFC7050

1. Scope

This specification is applied to the dynamic speaker which is used all of the electrical acoustic product.

-- compact, rich sound

-- applications: mobile phone, PDA, notebook computer, etc. ..

2. General

2.1 Out-Diameter : 45x33 mm

2.2 Height : 19 mm

2.3 Weight : 52 g

2.4 Operating Temperature range:

-20~+50°C without loss of function

2.5 Store Temperature range:

-40~+60°C without loss of function

3. Electrical and Acoustic Characteristics.

Test condition : 15 ~ 35 °C, 25% ~ 85% RH, 860~1060 mbar

No	Items	Specification
1	Impedance	4 Ω ± 15% (1Vrms at 2KHz)
2	Sound Pressure Level	90 dB ± 3dB (0.1W/0.1M average at 1.0,1.2,1.5,2kHz)
3	Resonance Frequency	350 Hz ± 20%
4	Frequency Range	Fo ~10KHz
5	Input Power	Rated 0.8 W/ Max. 1 W
6	Distortion	<10% Max. at 2kHz/2Vrms
7	Buzz and Rattle	Should not be audible buzzes,rattles when the 1.79V sine wave signal swept at frequency range.
8	Polarity	When supplied plus D.C. voltage to (+) terminal, the cone diaphragm must move to forward.

Specification for Speaker

Page 4/9

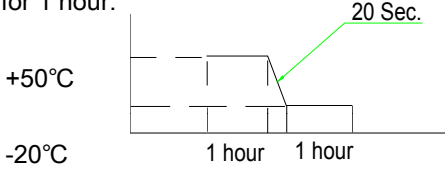
Revision No. 1.1

Model No. : KPB45x33-2-7050

Drawing No. KFC7050

4. Reliability Test

After test(1~7item), the speaker S.P.L . difference shall be within $\pm 3\text{dB}$, and the appearance not exist any change to be harmful to normal operation (e.g. cracks,rusts,damages and especially distortion).

No	Items	Specification
1	High Temperature Test	After being placed in a chamber with $+60\pm 3\text{ }^\circ\text{C}$ for 96 hours and then being placed in natural condition for 1 hour, speaker shall be measured.
2	Low Temperature Test	After being placed in a chamber with $-40\pm 3\text{ }^\circ\text{C}$ for 96 hours and then being placed in natural condition for 1 hour, speaker shall be measured.
3	Humidity Test	After being placed in a chamber with 85 to 90%R.H. at $+40\pm 2\text{ }^\circ\text{C}$ for 96 hours and then being placed in natural condition for 1 hour, speaker shall be measured.
4	Thermal Shock Test	<p>After being placed in a chamber at $+50^\circ\text{C}$ for 1 hour, then speaker shall be placed in a chamber at -20°C for 1 hour(1 cycle is the below diagram). After 6 above cycles, speaker shall be measured after being placed in natural condition for 1 hour.</p> 
5	Vibration Test	After being applied vibration of amplitude of 1.5mm with 10 to 55Hz band of vibration frequency to each of 3 perpendicular directions for 1 hour, then placed in natural condition for 1 hour, speaker shall be measured.
6	Drop Test	The speaker when mounted in the jig which weight 85g~100g, shall with stand 15 times random drops from a height of 1.5 meter to a concrete floor faced with 5mm thick hard wood board.and be nothing mechanical damage.
7	Load test	After being applied loading white noise with input power 0.8W(1.79Vrms.) for 96 hours, then placed in natural condition for 1 hour, speaker shall be measured.
8	Insulation test	When they are measured with DC 100V the insulation resistance between v.c. terminal and frame must be more than 1 MΩ

Specification for Speaker

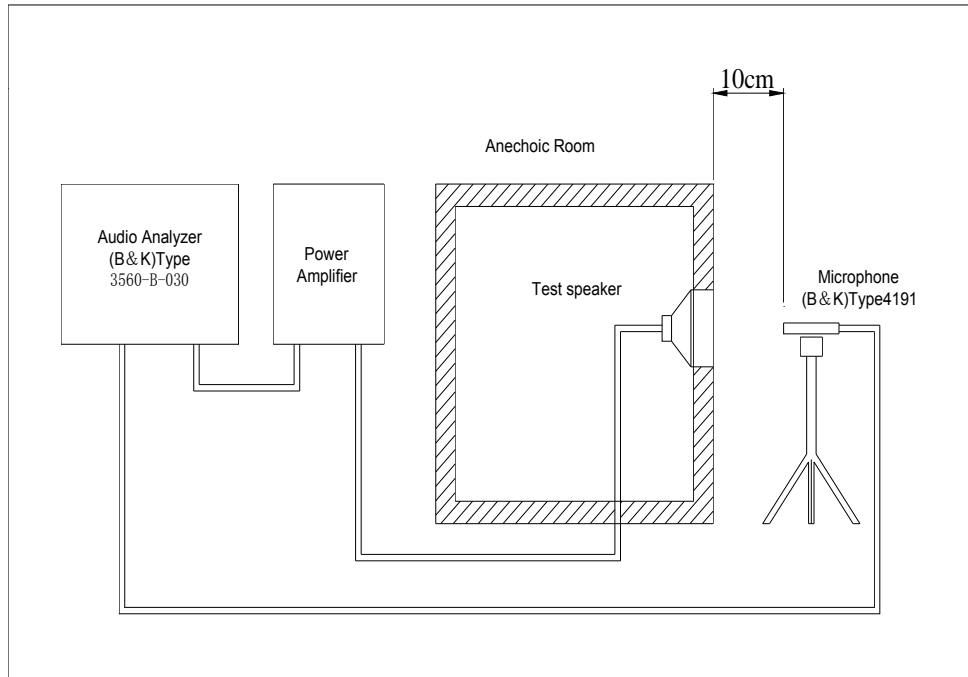
Page 5/9

Model No. : KPB45x33-2-7050

Revision No. 1.1

Drawing No. KFC7050

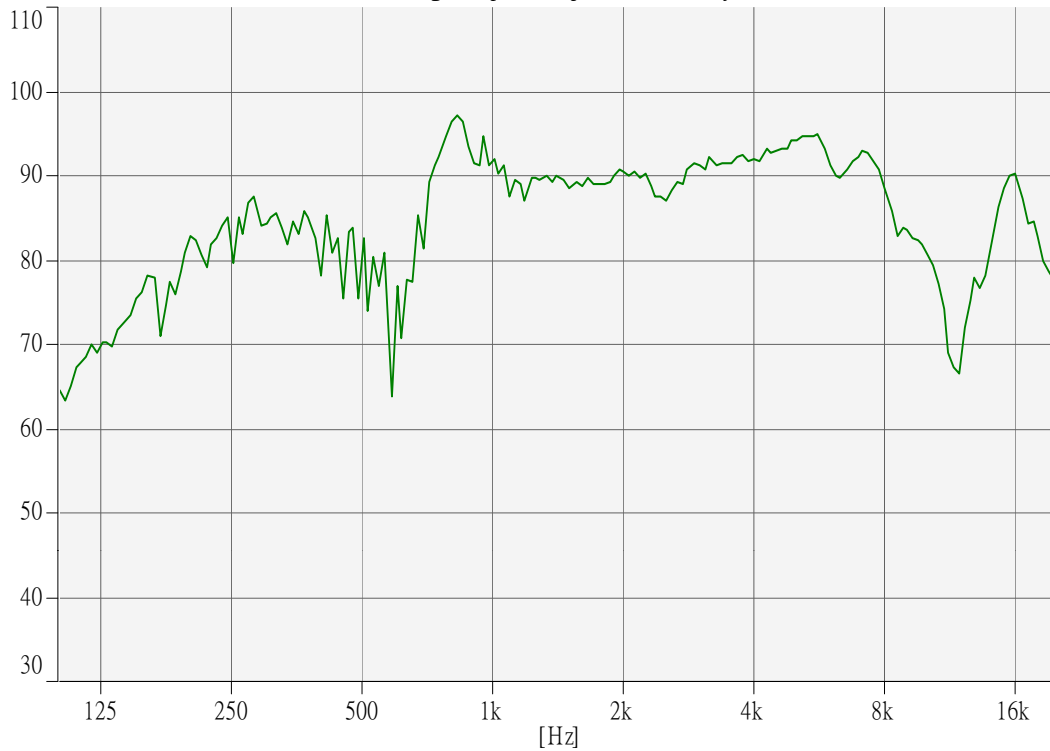
5. Measurement Block Diagram & Response curve



[dB/20.0u Pa]

Output Response(Signal 1) - Input (Magnitude)

Working : Input : Input : SSR Analyzer



Specification for Speaker

Page

6/9

Revision No.

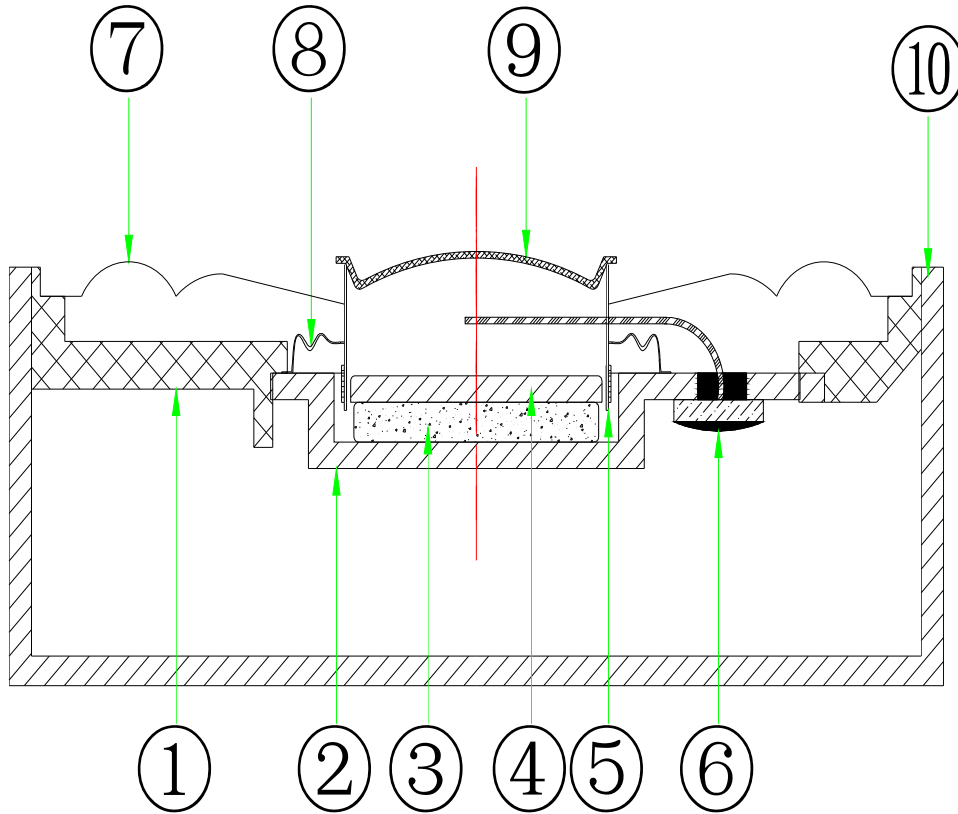
1.1

Model No. : KPB45x33-2-7050

Drawing No.

KFC7050

6. Structure



10	Box	1	ABS	
9	Dust Cap	1	Kraft Paper	
8	Damper	1	Silk	
7	Diaphragm	1	Tetoron	
6	Terminal	1	White Fiber	
5	V-coil	1	Lock bobbin	
4	Plate	1	SPCC	
3	Magnet	1	Nd-Fe-B	
2	YOKE	1	SPCC	
1	Frame	1	ABS	
No.	Part Name	Q'ty	Material	Remarks

Specification for Speaker

Page

7/9

Revision No.

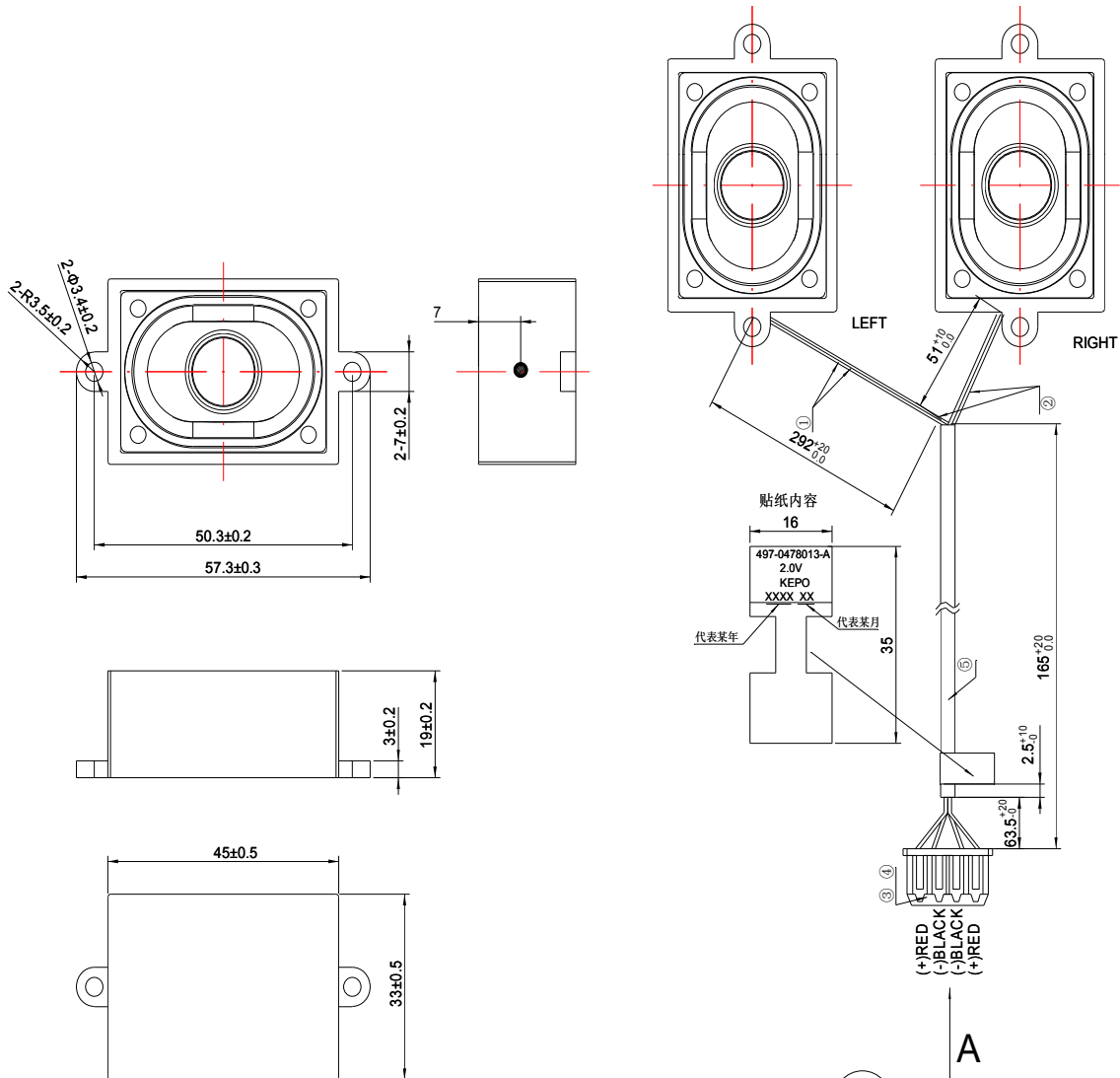
1.1

Model No. : KPB45x33-2-7050

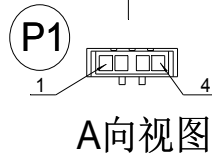
Drawing No.

KFC7050

7. Dimensions



P1序	SIGNAL	SPEAKERS
1	AMPOUT-R	RIGHT(+)
2	GND	RIGHT(-)
3	GND	LEFT(-)
4	AMPOUT-L	LEFT(+)



5	HEAT SHRINKABLE TEBE	1	
4	CRIMO TERMINAL	4	JST SPH-002T-P0.5S
3	CONNECTOR-1X4	1	JST PHR-4
2	WIRE	1	UL2468 #26AWG 红黑并线
1	WIRE	1	UL2468 #26AWG 红黑并线
ITEM	DESCRIPTION	QTY	SUPPLIER/PART NUMBER

FIRST ANGLE PROJECTION



UNIT : mm

Tolerance : ±0.5

Specification for Speaker

Page

8/9

Revision No.

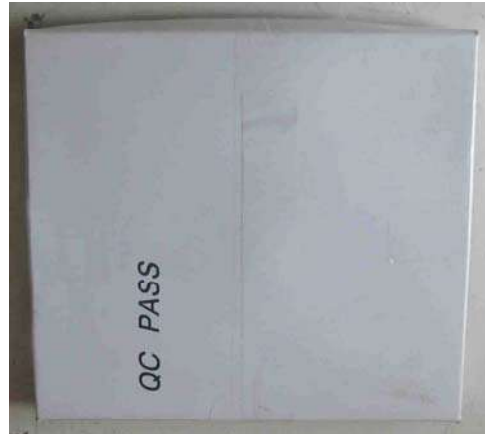
1.1

Model No. : KPB45x33-2-7050

Drawing No.

KFC7050

8. Packing



每盒装21PCS



每箱装10盒

QTY:21X10=210PCS

460x295x190mm

