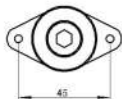
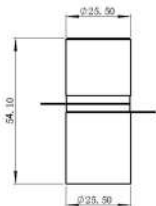


MODEL: CN4025-25HAS P8



ELECTRICAL SPECIFICATION:

Item	Unit	Standard
Resonant Frequency	KHz	40 ± 1
Resonant Impedance	Ω	25 ± 1
Capacitance	PF	2000 ± 10%
Diameter	MM	25
Total height	MM	54
Insulation Impedance	MΩ	10000 ± 1
Rated Power	W	30



Code Meaning of Clangsonic Transducer

"CN"-CLANGSONIC

"40"-Frequency

"25"-Diameter of Piezoceramics

"25"-Diameter of Radiating surface

"H"-Cylinder Base

"A"-Without threaded hole in radiating surface

"P8"-Yellow Piezoelectric Ceramic

"S"-New Model

共振曲线图



F <sub>0</sub> (Hz)	4050.4	C <sub>0</sub> (pF)	3.141718
F <sub>1</sub> (Hz)	4950.8	C <sub>90</sub> (pF)	2.872132
F <sub>2</sub> (Hz)	4951.8	C <sub>180</sub> (pF)	-0.289858
Q <sub>0</sub>	520.408317	L <sub>1</sub> (μH)	57.257137
Q <sub>resonance</sub>	35.878529		
R <sub>1</sub> (μmΩ)	20.821218		
R <sub>2</sub> (μmΩ)	42336.8		
K <sub>eff</sub>	0.287358		

Tel:086-576-87276622 Email:info@clangsonic.com

Website:www.clangsonic.com

