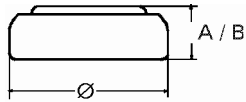


Data Sheet

Type Number 20361
Designation IEC SR 58
System Silver oxide / Zinc /
 KOH - Electrolyte



Nominal Voltage 1,55 V
Typical Capacity C 20 mAh
 Load 39 kOhm, at 20°C down to 1.2 V

Weight (approx.) 0,4 g
Volume 0,09 ccm
Coding..... Date of Manufacturing
 Month/Year

Temperature Ranges

	min	max.
Storage	-10°C	65°C
Discharge	-10°C	65°C

Dimensions

	min	max.
Diameter (Ø).....	7,55	7,9
Height (A/B)	1,85	2,1

Segment Watch / High Drain

Main Applications Watch
 Photo
 Electronic

Typical Capacities (at 20°C)

Discharge Type	Load	End Voltage:	1.2 V
Continuous	39000 Ω	Time:	480 h
24h/d,7d/w		Capacity [mAh]:	20
Current [µA]:	40	Energy [mWh]:	30,5