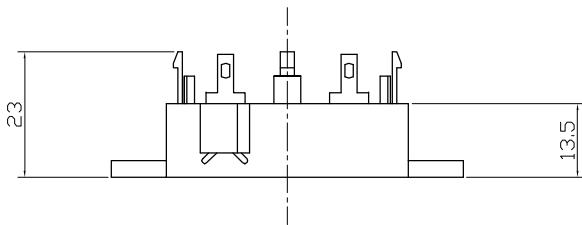


SPECIFICATION

1. Rated Voltage2.83Vrms Sine Wave
2. Max. Rated Input Voltage50Vp-p Square Wave
3. Min. Sound Pressure Level102dB at 2.83Vrms Sine Wave/2~2.5KHz/50cm
4. Rated Frequency Range2000~4000Hz
5. Max. Capacitance at 100Hz273nF
6. Shell Material/ColorPA66/Black
7. Cone material.....PVC
8. Operating Temperature-40~+60°C 95%RH
9. Store Temperature-40~+60°C
10. Weight9g



				KEPO NINGBO KEPO ELECTRONIC CO.,LTD http://www.chinaacoustic.com	
No.		DESCRIPTION	APPROVED	DATE	Tweeter PCT-4540MG
TOLERANCES UNLESS NOTED OTHERWISE X * .XX * .XXX * 90° FORMED +2° ANGLES -1°			APPROVALS	DATE	
FIRST ANGLE PROJECTION			DRAWN		UNIT
			CHECKED		mm
			APPROVED	07.03.26	SCALE
					NOT TO SCALE
					SHEET
					VER 1.3
					DWG. NO. KP3.840.508.01