

Push-Button Switch

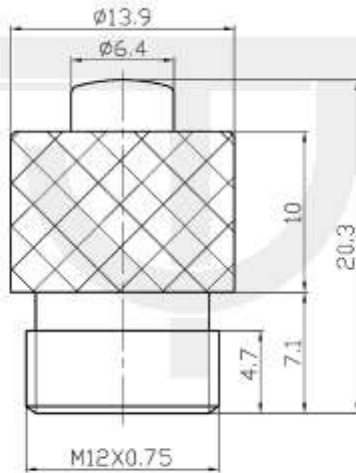
Q-9236

TYPE: **PBS-37A**

SPECIFICATIONS

Rating: 0.3A 30V DC; 0.6A 12V DC
Contact R: 20mΩ max
Insulation R: 500V DC 100MΩ min
Dielectric Strength: 1 Minute 500V AC
Operating Temperature: -25°C ~ +85°C
Electrical Life: 50, 000 Cycles

Outline Drawing



Mounting



Circuitry

