

# Illuminated Tactile Switch

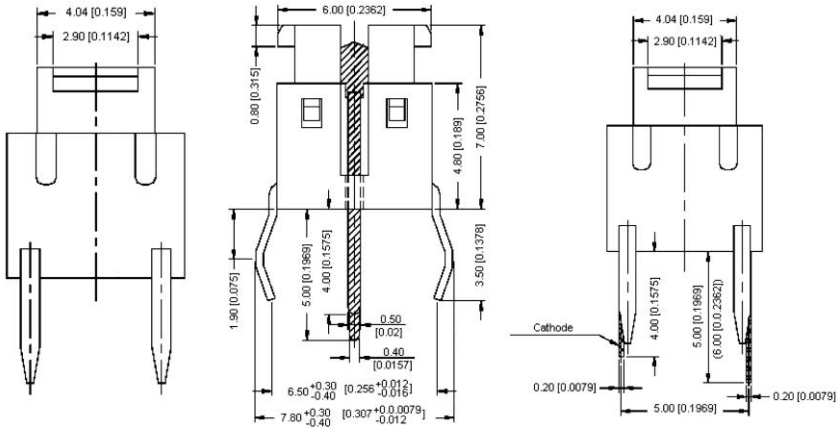
**Q-9181**

TYPE: **SI-TLL62**

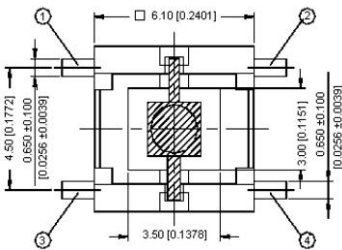
## SPECIFICATIONS

Rating: 50mA 12V DC  
 Contact R: 100mΩ max  
 Insulation R: 500V DC 100MΩ min  
 Dielectric Strength: 1 Minute 1000V AC  
 Operating Temperature: -25°C ~ +60°C  
 Electrical Life: 5,000, 000 Cycles  
 Operating Force: 300gf±50gf

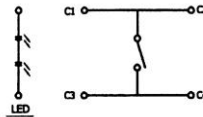
Outline Drawing



Mounting



Circuitry



ON - (OFF)  
(LED)