

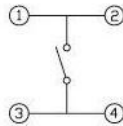
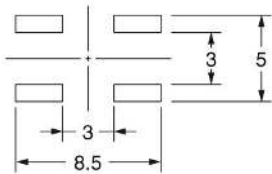
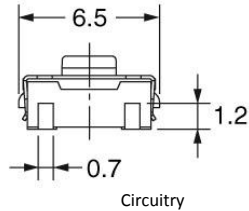
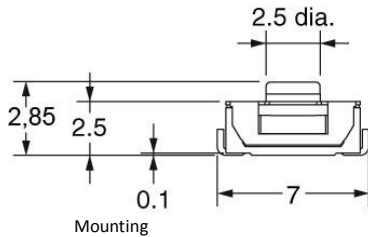
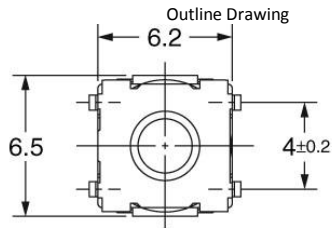
# Tact Switch

**Q-2562**

TYPE: **B3SL**

## SPECIFICATIONS

Contact Type	SPST
Rating	DC 12V, 50mA
Contacts Resistance	100mΩ max
Insulation Resistance	≥100MΩ Min
Dielectric Strengths	AC 250V / 1 minute
Life Test	100 000 Cycles Min
Operating temperature range	-25°C to +85°C
Operating Force	200±50 gf



**OFF – (ON)**