

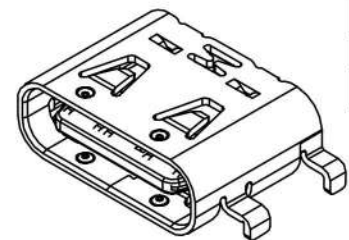
Rev.	ECN No.	DESCRIPTION
X3	2016/09/02	Update
X4	2016/12/06	Update
X5	2016/12/08	Update

INTERFACE (FRONT VIEW)

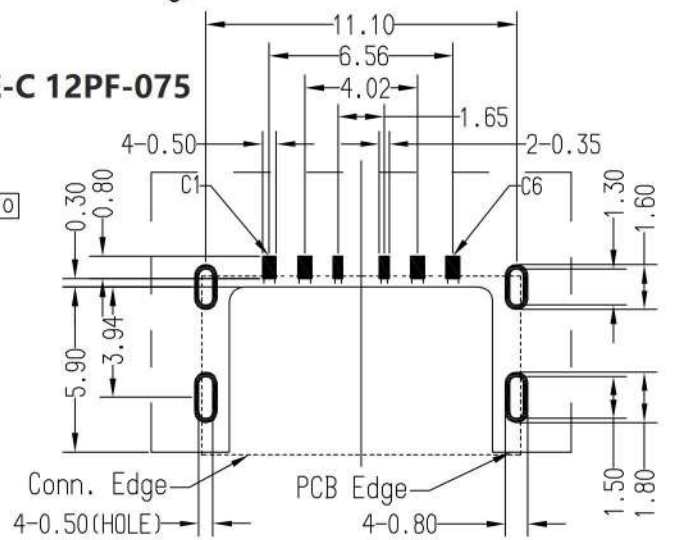
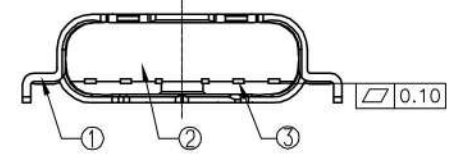
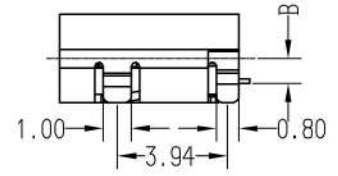
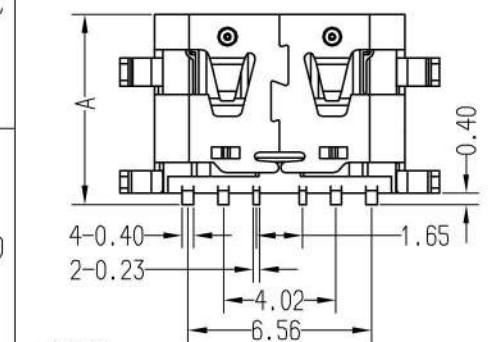
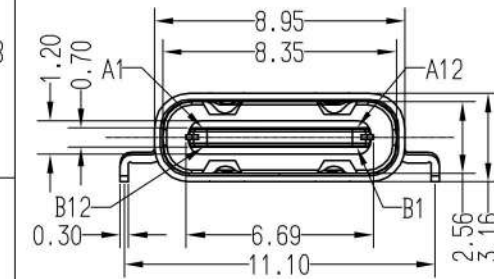
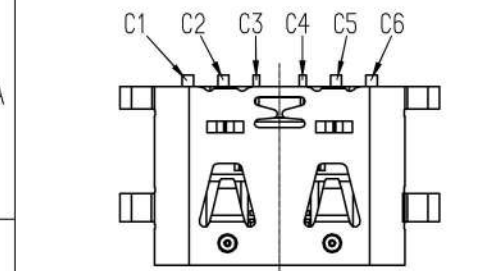
A1	A2	A3	A4	A5	A6	A7	A8	A9	A10	A11	A12
GND	/	/	V _{BUS}	CC1	/	/	/	V _{BUS}	/	/	GND
GND	/	/	V _{BUS}	/	/	/	CC2	V _{BUS}	/	/	GND
B12	B11	B10	B9	B8	B7	B6	B5	B4	B3	B2	B1

PIN ASSIGNMENT:

Pin No.	A1&B12	A4&B9	A5	B5	A9&B4	A12&B1
Signal Name	GND	V _{BUS}	CC1	CC2	V _{BUS}	GND
PCB PAD No.	C1	C2	C3	C4	C5	C6



ITEM:USB3.1 TYPE-C 12PF-075



PRODUCT NO.: C.LK.11 2 - 10 * - 0 2 4

Prefix Code
 Series Code
 USB Type C Conn.
 Connector Type
 Pin Number 10: 10Pin
 Plating 1:Gold flash
 2:15u"Au
 3:30u"Au

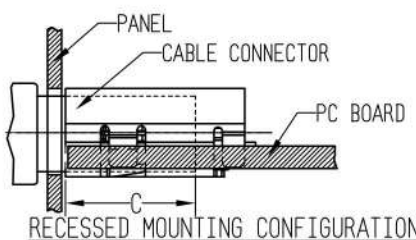
Lead Free Code
 4=Halogen Free
 Package Code
 2=Tap/Reel
 Body&Terminal Type:
 Right Angle&SMT
 Extension Code

ITEM	PART No.	Dim A	Dim B	Dim C
1	C.LK.112-10*4-024	6.50	0.88	4.40

RECOMMENDED P.C.B LAYOUT (COMPONENT SIDE)

PCB THICKNESS: 0.80±0.05mm
 DEFAULT TOLERANCE: ±0.05mm

- NOTES:
- ELECTRICAL CHARACTERISTICS:
 - CONTACT CURRENT RATING:
 5.0A FOR V_{BUS} PIN AND GND PIN.
 0.25A MIN FOR ALL OTHER TERMINALS.
 - CONTACT RESISTANCE:
 30MILLIOHM MAX FOR V_{BUS} AND GND CONTACTS.
 50MILLIOHM MAX FOR ALL OTHER CONTACTS.
 - DIELECTRIC WITHSTANDING VOLTAGE:100 VRMS AC MIN.
 - INSULATION RESISTANCE:100 MEGOHMS MIN.
 - MECHANICAL CHARACTERISTICS:
 - CONNECTOR INSERTION FORCE:5~20N.
 AT A MAXIMUM RATE OF 12.5MM PER SECOND.
 - CONNECTOR EXTRACTION FORCE:8~20N.
 AT A MAXIMUM RATE OF 12.5MM PER SECOND.
 - DURABILITY:10000 CYCLES.
 - OPERATING TEMPERATURE:-55° C TO +85° C.
 - RECOMMENED PROCESS: IR REFLOW 260° C,3~5SECONDS.
 - THE CONNECTOR IS RoHS COMPLIANT.



NO.	DESCRIPTION	QTY	MATERIAL	TREATMENT
③	CONTACT	6	COPPER ALLOY	NICKEL UNDERPLATING OVER ALL, GOLD PLATING AT CONTACT AREA AND TERMINATION.
②	PLASTIC	1	THERMOPLASTIC UL 94V-0	MOLDED COLOR: BLACK.
①	SHELL	1	STAINLESS STEEL	TAB WITH LEAD FREE TIN ALLOY.

TOLERANCES UNLESS OTHERWISE SPECIFIED							
X.	/	.XXX	/	SERIES:		TITLE:	
.X	±0.38	X.°	±1°	USB TYPE C		Power, SMT TYPE	
.XX	±0.25	.X°		APPD: Bel 2016/12/08		PART No.:	
				CKD: Bruce 2016/12/08		C.LK.112-10**024	
				DR: John 2016/12/08		DWG No.:	
						CC0008	
UNITS		MAT'L		FINISH		SCALE	
MM		/		/		FULL	
						SHEET 1/1	
						REV. X5	