

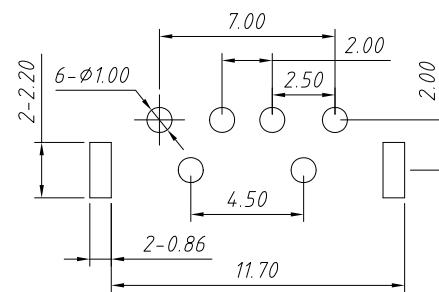
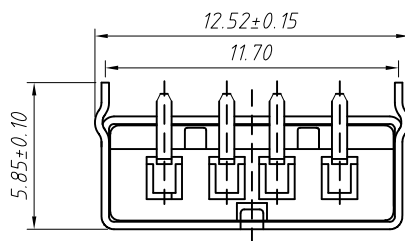
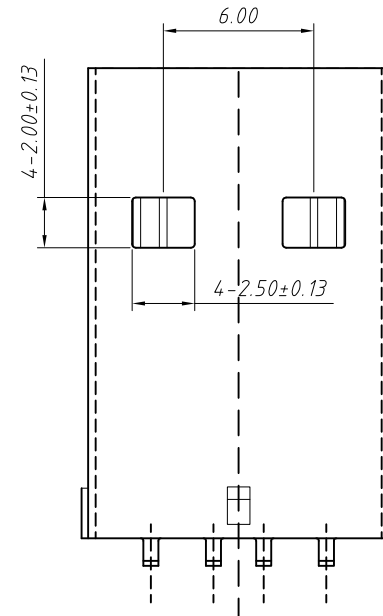
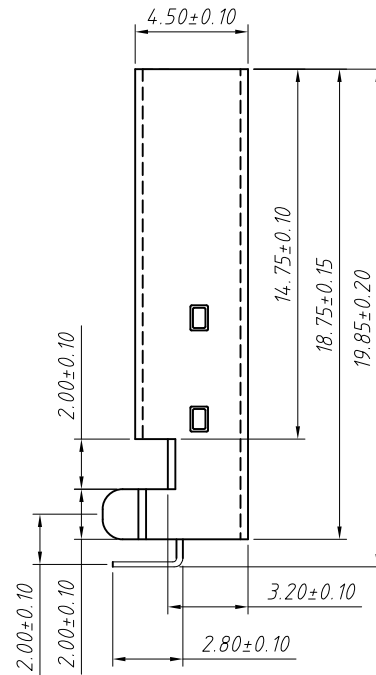
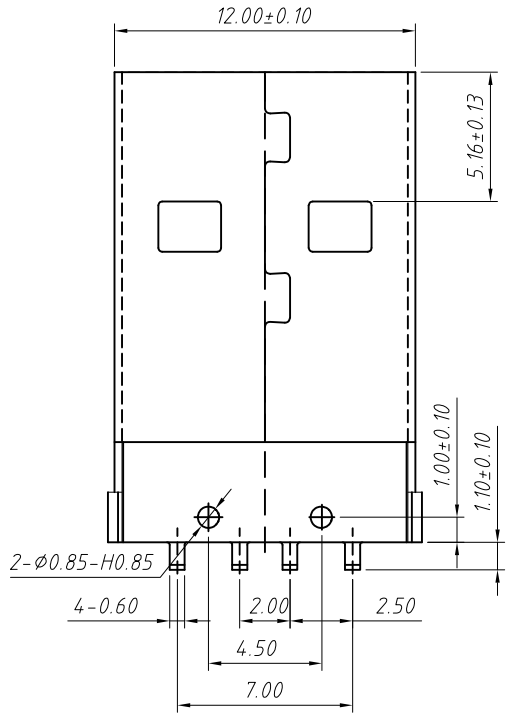
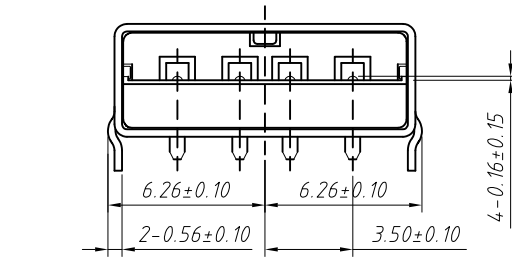
Material  
Housing: High Temperature Thermoplastic,  
UL 94V-0 PBT/LCP, Black/White.  
Contact: Copper Alloy C2680.  
Shell: Copper Alloy C2680/SPCC.

Finish:  
Contact: Plated Gold In Mating Area;  
Tin On Solder Tails.  
Shell: Nickel Plating.

Electrical:  
Current Rating: 1.5A/Contact Terminal.  
Voltage Rating: 30V DC  
Contact Resistance: 30mΩ Max.  
Dielectric Withstanding Voltage:  
500 V AC AT Sea Level.  
Insulation Resistance: 1000MΩ Min.  
Connector Mate and Unmated Force  
Mate Force: 3.75kgf Max.  
Unmated Force: 1.02kgf Min.  
Terminal Retention: 1.2kgf Min.

Order Information

L-KLS1- 180A - B  
Color: W=White  
B=Black  
USB 2.0 A Male  
RoHS



PCB LAYOUT

GENERAL TOLERANCE	PROJECTION		Description:
X. ±0.50	UNITS	mm	CONN PLUG USB TYPE A MALE DIP R/A MID MOUNT 1.3mm
.X ±0.25	SCALE	1:1	
.XX ±0.10	Draw by:	Jenny	
ANGLE TOLERANCE	Check by:		KLS P/N: L-KLS1-180A-X
X. ±5°	Date	2018-03-01	NingBo KLS ELECTRONIC CO.,L TD.
.X ±3°	SHEET	1 OF 1	
.XX ±2°			