

SN Series Part Numbering



Features

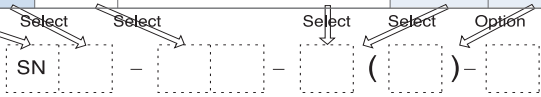
- Push-pull technology
- Miniature circular
- Light weight
- Low cost

Applications

- Professional audio and video
- CCTV system
- Portable wireless radio
- Factory Automation
- Computers and peripherals
- Medical and much more

Part Numbering

| Product Number | | Size | Number of Contacts | Suffix | Optional Suffix | | Contact Type | Notes | | | |
|----------------|--------|---------|---|---|-----------------|---|--------------|----------------------------|----------------------------|---|----------------------------|
| Series | Prefix | | | | S | B | | | | | |
| SN | | 8 or 10 | 8 size : 4,5,6 10 size : 2,3,4,9,10,12 | P / PS | | ● | P | Plug | | | |
| | | | | PL | | ● | P | Right-angle plug | | | |
| | | | | R | ● | ● | S | Receptacle | | | |
| | | | | RPCB | ● | ● | S | PCB receptacle | | | |
| | | | | LRPCB | ● | ● | S | Right-angle PCB receptacle | | | |
| | | | | P / PS | | ● | S | Plug | | | |
| | H | | | | 8 or 10 | 8 size : 4,5,6 10 size : 2,3,4,9,10,12 | PL | | ● | S | Right-angle plug |
| | | | | | | | R | ● | ● | P | Receptacle |
| | | | | | | | RPCB | ● | ● | P | PCB receptacle |
| | | | | | | | LRPCB | ● | ● | P | Right-angle PCB receptacle |
| | | | | | | | P | | ● | P | Plug (Clamp type) |
| | | | | | | | P | | ● | S | Plug (Clamp type) |
| | 1 | | 8 or 10 | 8 size : 4,5,6 10 size : 2,3,4,9,10,12 | | ● | ● | S | Adapter | | |
| | | | | | | ● | ● | P | Adapter | | |
| | | | | | P | | ● | P | Plug (Screw-on type) | | |
| | | | | | R | ● | ● | S | Receptacle (Screw-on type) | | |
| 1H | | 8 or 10 | 8 size : 4,5,6 10 size : 2,3,4,9,10,12 | | ● | ● | S | Adapter | | | |
| | | | | | ● | ● | P | Adapter | | | |
| A | | 8 or 10 | 8 size : 4,5,6 10 size : 2,3,4,9,10,12 | P | | ● | P | Plug (Screw-on type) | | | |
| | | | | R | ● | ● | S | Receptacle (Screw-on type) | | | |
| HA | | 8 or 10 | 8 size : 4,5,6 10 size : 2,3,4,9,10,12 | | ● | ● | S | Adapter | | | |
| | | | | | ● | ● | P | Adapter | | | |
| 2 | | 8 or 10 | 8 size : 4,5,6 10 size : 2,3,4,9,10,12 | P | | ● | P | Plug (Screw-on type) | | | |
| | | | | R | ● | ● | S | Receptacle (Screw-on type) | | | |
| 2A | | 8 or 10 | 8 size : 4,5,6 10 size : 2,3,4,9,10,12 | | ● | ● | S | Adapter (Screw-on type) | | | |
| | | | | | ● | ● | S | Adapter (Screw-on type) | | | |



Ordering Part Number (see examples)

| Connector Series (Prefix) | |
|--------------------------------------|-----------------------------------|
| SN | SN series |
| SNH | Reverse contact |
| SN1 | Clamp type plug |
| SN1H | Clamp type & reverse contact plug |
| SNA | Adapter for SN series |
| SNHA | Adapter for SNH series |
| SN2 | Screw-on type |
| SN2A | Adapter for SN2 series |
| Size | Option |
| 8,10 | B : Black plug housing |
| No. of Contacts | |
| 8 Size : 4,5,6 | 10 Size : 2,3,4,9,10,12 |
| Body Type | |
| P : Plug | PL : Right-angle plug |
| PS : Short Plug Housing | |
| R : Receptacle (solder termination) | |
| RPCB : Receptacle (PCB termination) | |
| LRPCB : Right-angle Receptacle (PCB) | |
| blank : Adapter | |
| Option | |
| S : Silver Plating contact | |

Examples

- SN - 8 - 4 (P)
SN series - Size 8 Plug - 4 Male Contact
- SN - 8 - 6 (RPCB)
SN series - Size 8 PCB Receptacle - 6 Female Contact
- SN - 8 - 6 (P) - SB
SN series - Size 8 - 6 contact (Block Plug) - Silver Plating Contact & Black plug housing
- SN1 - 10 - 12 (R) - S
SN1 series - Size 10 Receptacle - 12 Female Contacts - Silver Plating contact
- SN2A - 10 - 2 - S
SN2A series - Size 10 Adapter - 2 contact - Silver Plating contact
- SN - 8 - 4 (LRPCB)K - S
SN series - Size 8 - 4 contact (Right-angle PCB receptacle, Any type) - Silver Plating contact

Specifications subject to change without notice. Consult Sam Woo Electronics for the latest specifications.

■ Major Performances / Contact Arrangements

| Performance | Size 8 | |
|--|----------|----------|
| | 4 | 5 |
| Withstanding Voltage (per min) ¹ | AC 300V | AC 300V |
| Current | 2A | 2A |
| Insulation Resistance (Minimum) ² | 1,000M Ω | 1,000M Ω |
| Contact Resistance (Maximum) ³ | 10m Ω | 10m Ω |
| Solder Pot Inside Diameter | ∅ 0,7 | ∅ 0,7 |
| Wire Gauge (Maximum) | AWG26 | AWG26 |
| Contact Arrangement | | |

| Performance | Size 10 | | | | | |
|--|----------|----------|----------|----------|----------|----------|
| | 2 | 3 | 4 | 9 | 10 | 12 |
| Withstanding Voltage (per min) ¹ | AC 500V | AC 500V | AC 500V | AC 300V | AC 300V | AC 300V |
| Current | 3A | 3A | 3A | 2A | 2A | 2A |
| Insulation Resistance (Minimum) ² | 1,000M Ω | 1,000M Ω | 1,000M Ω | 1,000M Ω | 1,000M Ω | 1,000M Ω |
| Contact Resistance (Maximum) ³ | 10m Ω | 10m Ω | 10m Ω | 10m Ω | 10m Ω | 10m Ω |
| Solder Pot Inside Diameter | ∅ 1,0 | ∅ 1,0 | ∅ 1,0 | ∅ 0,7 | ∅ 0,7 | ∅ 0,7 |
| Wire Gauge (Maximum) | AWG20 | AWG20 | AWG20 | AWG26 | AWG26 | AWG26 |
| Contact Arrangement | | | | | | |

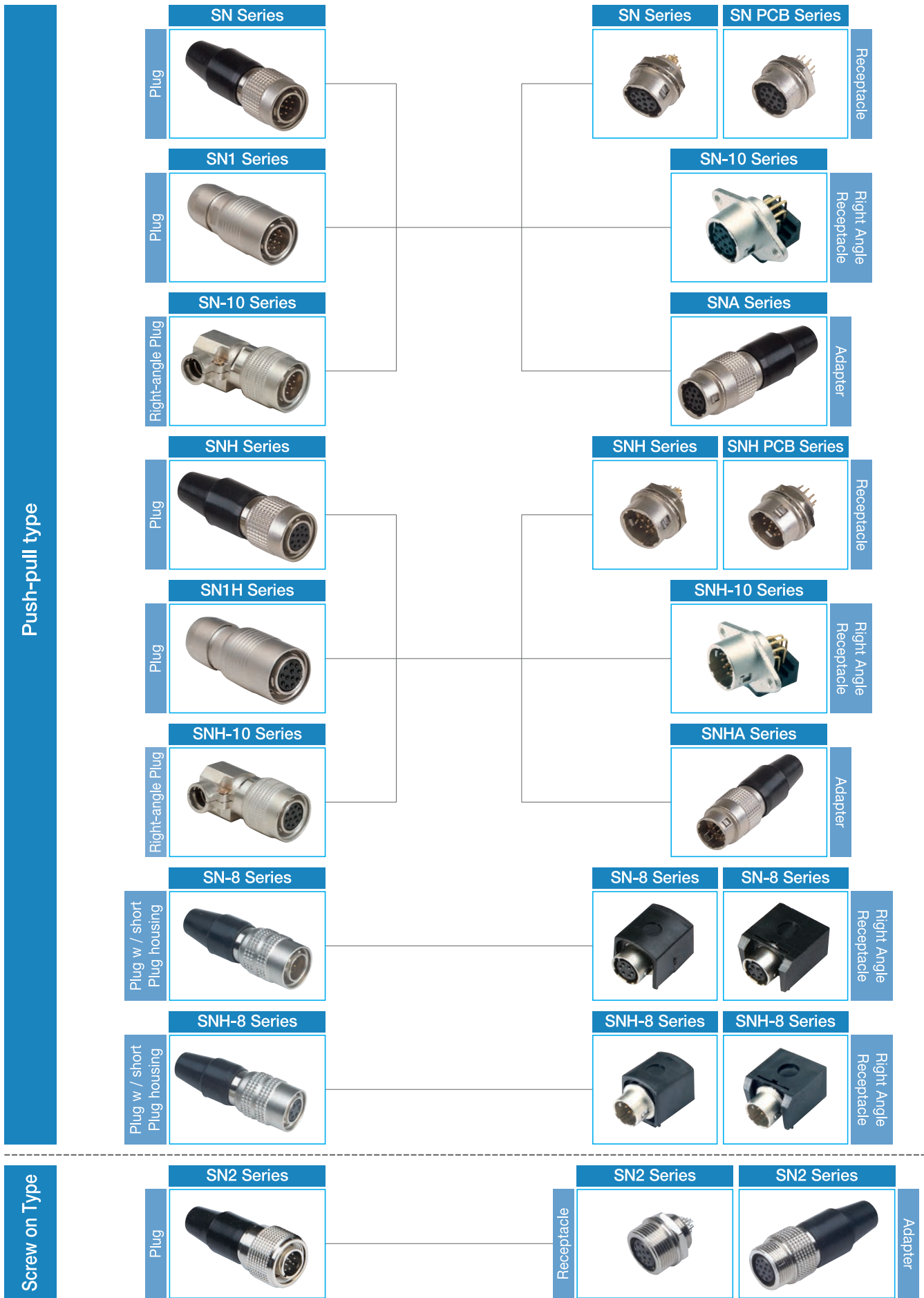
¹ Withstanding voltage is the tested voltage value in this table.
² Insulation resistance is measured at DC 100V.
³ Contact resistance is measured at DC 1A.
 • Values are from tested items and may not apply to all connectors.
 • Specifications subject to change without notice.
 • Consult Sam Woo Electronics for the latest specifications.
⁴ Connector contact arrangement is from mating surface.

Contact Diameter
 ∅ 0,55mm ∅ 1,0mm

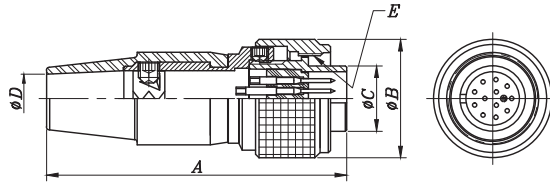
■ Material Used / Finish

| | Material | Finish |
|-----------|----------------------|-----------------|
| Body | Zinc alloy and brass | Ni Plating |
| Insulator | PA | Black |
| Contacts | Male | Brass |
| | Female | Phosphor bronze |

SN Series Mini-map

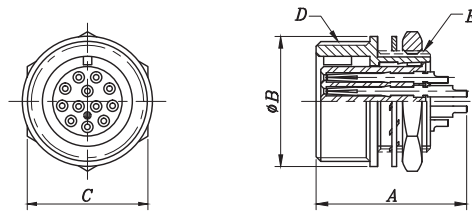


■ SN2 Plug



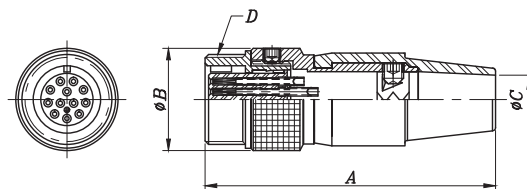
| Product Number | A | φ B | φ C | φ D | E | Product Number | A | φ B | φ C | φ D | E |
|----------------|---------------|-----|-----|-----|-----------|----------------|------|------|-----|-----|-----------|
| SN2-8-4 (P) | 35,1 | 12 | 7 | 5,1 | M10×0,75P | SN2-10-2 (P) | 43,0 | 17,0 | 9,4 | 7,0 | M13×0,75P |
| SN2-8-5 (P) | | | | | | SN2-10-3 (P) | | | | | |
| SN2-8-6 (P) | | | | | | SN2-10-4 (P) | | | | | |
| | SN2-10-9 (P) | | | | | | | | | | |
| | SN2-10-10 (P) | | | | | | | | | | |
| | SN2-10-12 (P) | | | | | | | | | | |

■ SN2 Receptacle



| Product Number | A | φ B | C | D | E | Product Number | A | φ B | C | D | E |
|----------------|---------------|------|----|-----------|---------|----------------|------|-----|----|-----------|-----------|
| SN2-8-4 (R) | 14,4 | 10,9 | 10 | M10×0,75P | M8×0,5P | SN2-10-2 (R) | 16,5 | 14 | 13 | M13×0,75P | M11×0,75P |
| SN2-8-5 (R) | | | | | | SN2-10-3 (R) | | | | | |
| SN2-8-6 (R) | | | | | | SN2-10-4 (R) | | | | | |
| | SN2-10-9 (R) | | | | | | | | | | |
| | SN2-10-10 (R) | | | | | | | | | | |
| | SN2-10-12 (R) | | | | | | | | | | |

■ SN2A Adapter

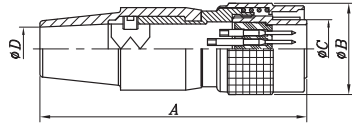


| Product Number | A | φ B | φ C | D | Product Number | A | φ B | φ C | D |
|----------------|------------|------|-----|-----------|----------------|------|------|-----|-----------|
| SN2A-8-4 | 41,7 | 14,7 | 7,0 | M13×0,75P | SN2A-10-2 | 41,7 | 14,7 | 7,0 | M13×0,75P |
| SN2A-8-5 | | | | | SN2A-10-3 | | | | |
| SN2A-8-6 | | | | | SN2A-10-4 | | | | |
| | SN2A-10-9 | | | | | | | | |
| | SN2A-10-10 | | | | | | | | |
| | SN2A-10-12 | | | | | | | | |

Specifications subject to change without notice. Consult Sam Woo Electronics for the latest specifications.

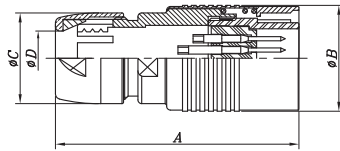
SN Series Push-pull type SN Male Plug

■ SN Plug



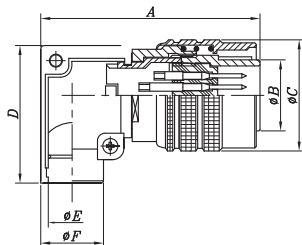
| Product Number | A | ø B | ø C | ø D |
|----------------|----|------|-----|-----|
| SN-8-4(P) | 35 | 11,5 | 7 | 5 |
| SN-8-5(P) | | | | |
| SN-8-6(P) | | | | |
| SN-10-2(P) | 43 | 14,9 | 9,4 | 7 |
| SN-10-3(P) | | | | |
| SN-10-4(P) | | | | |
| SN-10-9(P) | | | | |
| SN-10-10(P) | | | | |
| SN-10-12(P) | | | | |

■ SN1 Plug



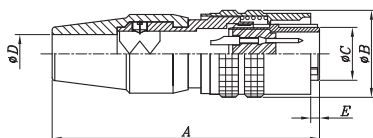
| Product Number | A | ø B | ø C | ø D |
|----------------|----|------|------|-----|
| SN1-8-4(P) | 28 | 11,0 | 9,0 | 5,2 |
| SN1-8-5(P) | | | | |
| SN1-8-6(P) | | | | |
| SN1-10-2(P) | 32 | 14,0 | 12,0 | 7,2 |
| SN1-10-3(P) | | | | |
| SN1-10-4(P) | | | | |
| SN1-10-9(P) | | | | |
| SN1-10-10(P) | | | | |
| SN1-10-12(P) | | | | |

■ SN Right-Angle Plug



| Product Number | A | ø B | ø C | D | ø E | ø F |
|----------------|------|-----|------|------|-----|-----|
| SN-8-4(PL) | 25,9 | 7,0 | 11,5 | 15 | 5,0 | 6,6 |
| SN-8-5(PL) | | | | | | |
| SN-8-6(PL) | | | | | | |
| SN-10-9(PL) | 29,0 | 9,4 | 14,7 | 18,2 | 6,3 | 8,3 |
| SN-10-10(PL) | | | | | | |
| SN-10-12(PL) | | | | | | |

■ SN Plug (Short plug housing)

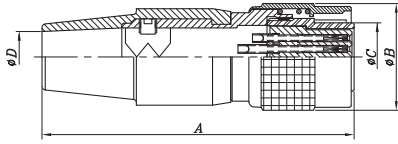


| Product Number | A | ø B | ø C | ø D | E |
|----------------|------|------|-----|-----|-----|
| SN-8-4(PS) | 35,0 | 11,5 | 7,0 | 5,1 | 0,6 |
| SN-8-6(PS) | | | | | |

Specifications subject to change without notice. Consult Sam Woo Electronics for the latest specifications.

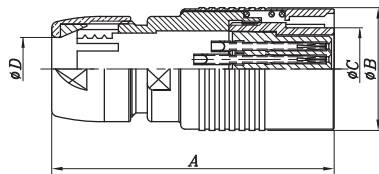
SN Series Push-pull type SNH Female Plug

■ SNH Plug



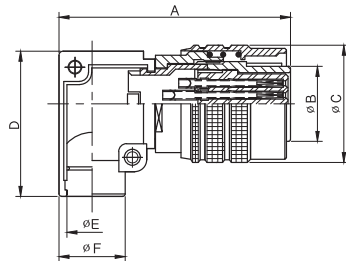
| Product Number | A | φ B | φ C | φ D |
|----------------|----|------|-----|-----|
| SNH-8-4(P) | 35 | 11,5 | 7 | 5 |
| SNH-8-5(P) | | | | |
| SNH-8-6(P) | | | | |
| SNH-10-2(P) | 43 | 14,9 | 9,4 | 7 |
| SNH-10-3(P) | | | | |
| SNH-10-4(P) | | | | |
| SNH-10-9(P) | | | | |
| SNH-10-10(P) | | | | |
| SNH-10-12(P) | | | | |

■ SN1H Plug



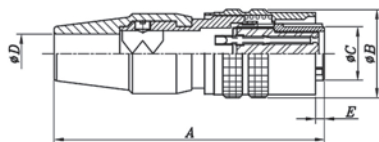
| Product Number | A | φ B | φ C | φ D |
|----------------|----|------|------|-----|
| SN1H-8-4(P) | 28 | 11,0 | 9,0 | 5,2 |
| SN1H-8-5(P) | | | | |
| SN1H-8-6(P) | | | | |
| SN1H-10-2(P) | 32 | 14,0 | 12,0 | 7,2 |
| SN1H-10-3(P) | | | | |
| SN1H-10-4(P) | | | | |
| SN1H-10-9(P) | | | | |
| SN1H-10-10(P) | | | | |
| SN1H-10-12(P) | | | | |

■ SNH Right Angle Plug



| Product Number | A | φ B | φ C | D | φ E | φ F |
|----------------|------|-----|------|------|-----|-----|
| SNH-8-4(PL) | 25,9 | 7,0 | 11,5 | 15 | 5,0 | 6,6 |
| SNH-8-5(PL) | | | | | | |
| SNH-8-6(PL) | | | | | | |
| SNH-10-9(PL) | 29,0 | 9,4 | 14,7 | 18,2 | 6,3 | 8,3 |
| SNH-10-10(PL) | | | | | | |
| SNH-10-12(PL) | | | | | | |

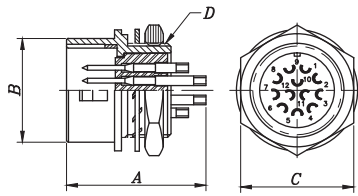
■ SNH Plug (Short plug housing)



| Product Number | A | φ B | φ C | φ D | E |
|----------------|------|------|-----|-----|-----|
| SNH-8-4(PS) | 35,0 | 11,5 | 7,0 | 5,1 | 0,6 |
| SNH-8-6(PS) | | | | | |

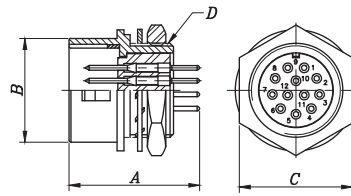
Specifications subject to change without notice. Consult Sam Woo Electronics for the latest specifications.

■ SNH Receptacle



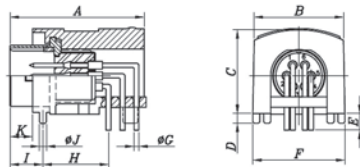
| Product Number | A | φB | C | D | Product Number | A | φB | C | D |
|----------------|--------------|-----|------|---------|----------------|------|------|------|-----------|
| SNH-8-4 (R) | 14,2 | 8,8 | 10,0 | M8×0,5P | SNH-10-2(R) | 16,2 | 11,9 | 13,0 | M11×0,75P |
| SNH-8-5 (R) | | | | | SNH-10-3(R) | | | | |
| SNH-8-6 (R) | | | | | SNH-10-4(R) | | | | |
| | SNH-10-9(R) | | | | | | | | |
| | SNH-10-10(R) | | | | | | | | |
| | SNH-10-12(R) | | | | | | | | |

■ SNH PCB Receptacle



| Product Number | A | φB | C | D | Product Number | A | φB | C | D |
|----------------|-----------------|-----|----|---------|----------------|----|------|----|-----------|
| SNH-8-4(RPCB) | 15 | 8,8 | 10 | M8×0,5P | SNH-10-2(RPCB) | 15 | 11,9 | 13 | M11×0,75P |
| SNH-8-5(RPCB) | | | | | SNH-10-3(RPCB) | | | | |
| SNH-8-6(RPCB) | | | | | SNH-10-4(RPCB) | | | | |
| | SNH-10-9(RPCB) | | | | | | | | |
| | SNH-10-10(RPCB) | | | | | | | | |
| | SNH-10-12(RPCB) | | | | | | | | |

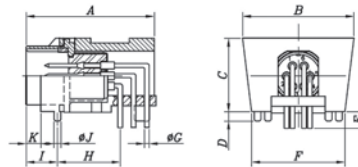
■ SNH Right Angle PCB Receptacle (Any Type)



| Product Number | A | B | C | D | E | F | φG | H | I | φJ | K |
|-----------------|------|------|------|-----|-----|------|-----|-----|-----|-----|-----|
| SNH-8-4(LRPCB)K | 19,2 | 12,8 | 12,0 | 1,3 | 2,4 | 13,2 | 0,7 | 9,4 | 4,7 | 1,0 | 3,2 |
| SNH-8-6(LRPCB)K | | | | | | | | | | | |

! SNH-8-4(LRPCB)K1, SNH-8-6(LRPCB)K1 only mates with SNH-8-4(PS), SNH-8-6(PS) plugs.

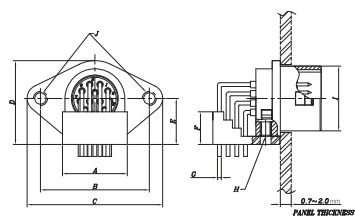
■ SNH Right Angle PCB Receptacle (Magic Type)



| Product Number | A | B | C | D | E | F | φG | H | I | φJ | K |
|------------------|------|------|------|-----|-----|------|-----|-----|-----|-----|-----|
| SNH-8-4(LRPCB)K1 | 19,2 | 16,7 | 11,0 | 1,3 | 2,4 | 14,0 | 0,7 | 9,4 | 4,7 | 1,0 | 2,2 |
| SNH-8-6(LRPCB)K1 | | | | | | | | | | | |

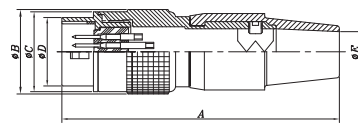
! SNH-8-4(LRPCB)K1, SNH-8-6(LRPCB)K1 only mates with SNH-8-4(PS), SNH-8-6(PS) plugs.

■ SNH Right Angle PCB Receptacle

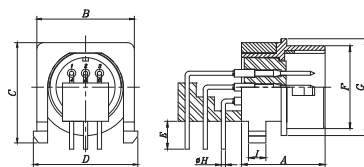


| Product Number | A | B | C | D | E | F | φG | H | φI | J |
|------------------|------|----|------|------|-----|---|-----|---------------|------|----------------|
| SNH-10-12(LRPCB) | 11,9 | 20 | 24,9 | 15,4 | 8,5 | 6 | 0,7 | M2,0 ×0,4P | 11,9 | M2,6 ×0,45P |

■ SNHA Adapter



| Product Number | A | φB | φC | φD | φE | Product Number | A | φB | φC | φD | φE |
|----------------|------------|------|------|-----|-----|----------------|------|------|------|------|-----|
| SNHA-8-4 | 40,2 | 11,5 | 10,9 | 8,8 | 5,1 | SNHA-10-2 | 48,0 | 14,9 | 13,9 | 11,9 | 7,0 |
| SNHA-8-5 | | | | | | SNHA-10-3 | | | | | |
| SNHA-8-6 | | | | | | SNHA-10-4 | | | | | |
| | SNHA-10-9 | | | | | | | | | | |
| | SNHA-10-10 | | | | | | | | | | |
| | SNHA-10-12 | | | | | | | | | | |



| Product Number | A | B | C | D | E | F | G | φH | I |
|------------------|----|----|------|----|---|------|------|-----|-----|
| SNH-10-9(LRPCB)K | 12 | 14 | 14,3 | 15 | 4 | 11,9 | 13,9 | 0,7 | 2,5 |

Specifications subject to change without notice. Consult Sam Woo Electronics for the latest specifications.

General Instruction / Information

- Diagram 1 shows a sample wiring for SN series.
- Soldering must be done quickly and carefully to prevent damage to insulator.
- Receptacles do not require additional instructions.
- Specification of Nut

| Size | Nut Specification | Nut Tightening force |
|---------|-------------------|----------------------|
| SN - 8 | M8 × 0,5P | 15~18(kgf · cm) |
| SN - 10 | M11 × 0,75P | 20~23(kgf · cm) |

Wiring Sequence

- ① Select cable according to outer diameter and cross section, lower than 0,129mm²(AWG#26).
- ② Insert RUBBER BUSHING to cable.
- ③ Insert PLUG HOUSING to cable.
- ④ Strip cable per dimension given and loosen braid.
- ⑤ Secure PLUG BODY to jig for soldering.
- ⑥ Solder stripped cable to pin.
- ⑦ Fasten CRIMP using hand crimp tool (SA-HCT^①)
- ⑧ Lock PLUG HOUSING and PLUG BODY using tightening force displayed on Table 1.
- ⑨ Tighten WRENCH BOLT using 0,3N force onto one of two embossed parts of crimp.
- ⑩ Cover RUBBER BUSHING onto PLUG HOUSING.

^① See below for information on SA-HCT.

Diagram 1

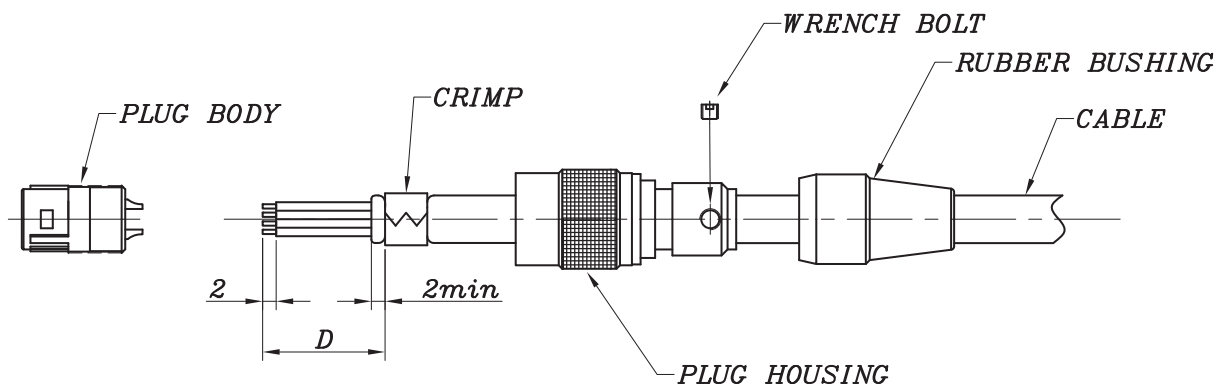


Table 1

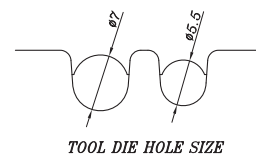
unit : mm

| Size | Spanner Jaw | D (Dimension) | Tightening Force | Notes |
|---------|-------------|---------------|-----------------------|-------------------------------|
| SN - 8 | 8 | 10 | 1,5N · m (15kgf · cm) | SA-HCT size \varnothing 5,5 |
| SN - 10 | 10 | 16 | 2,0N · m (20kgf · cm) | SA-HCT size \varnothing 7,0 |

SA-HCT (Hand Crimp Tool)



Specially designed for Sam Woo's connector, the low-cost and efficient SA-HCT provides the best crimping results.



Specifications subject to change without notice. Consult Sam Woo Electronics for the latest specifications.

