

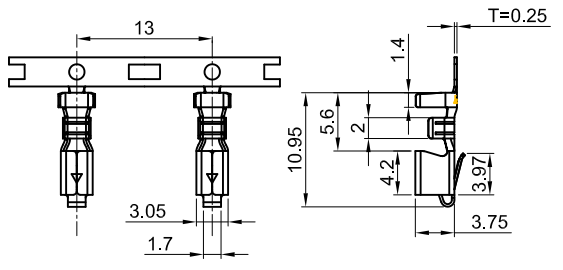
The information provided herein is from CONNELY Electronic Co., Ltd. and is confidential. Any disclosure to a party other than the recipient is prohibited. The intellectual properties and its rights contained herein, including but not limited to, trademarks, patents, copyrights, trade secrets, and technical know-how, are owned exclusively by CONNELY or its affiliates. Unauthorized use of this information in any format or manner, CONNELY may enforce its intellectual property rights at its own discretion; failures or delays to exercise such rights does not constitute a waiver of such rights.

1 2 3 4 5 6 7 8

Dept	
Qty	
DC	1
ED	1
IE	1
ISO	1
PD	1
R&D	1
SD	1
QA	1
QC	1
QE	1

REV.	DESCRIPTION	DRAWN	CHECKED	APPROVED
A	NEW RELEASE	HP 29/06/05		LJC 29/06/05
B	ADD P/N CODE	JLZ 01/30/15'		LJC 01/30/15'
C	DRAWING UPDATE	JLZ 12/27/16'		
E	DRAWING UPDATE	JLZ 02/28/19'		

**Femle Terminal**



T-DS1073- S C 6 0 0

Contact Plating  
6: Tin

**Notes:**

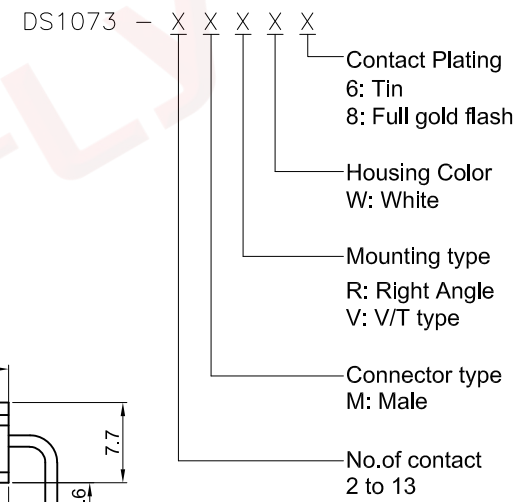
**Specifications:**

- Contact Resistance: 30mΩ Max.
- Insulation Resistance: 1000MΩ Min.
- Dielectric Withstanding Voltage: 1000V AC(rms) For 1 Minute.
- Current Rating:7A.
- Temperature: -25°C~+85°C.
- Wire range: AWG#22~#18.
- Recommend PCB thickness:1.6mm.

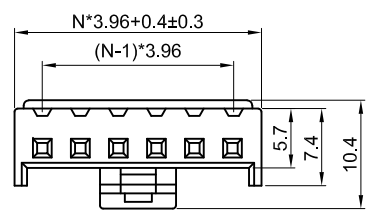
**Materials:**

- Contact Material: Copper Alloy.
- Contact Plating: Tin Plating Over Nickel.
- Insulator Material: Nylon66.

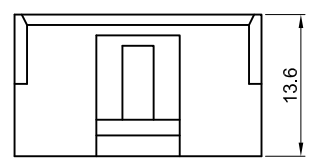
**Product Number Code:**



**Femle Housing**



N=No. of contacts



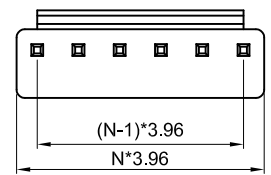
**Female Terminal**

Wire Range		O.D of Wire
Section area mm <sup>2</sup>	AWG#	mm
0.33~0.83	22~18	1.7~3.0

I-DS1073-S C W 0 X

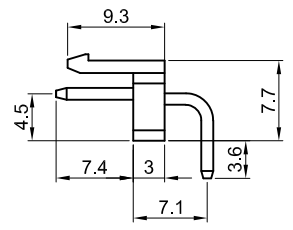
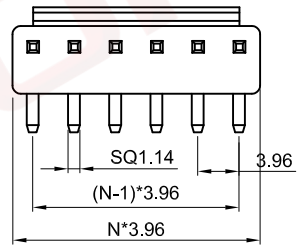
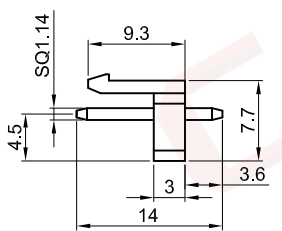
No. of contact  
02~13

**V/T Type**



N=No. of contacts

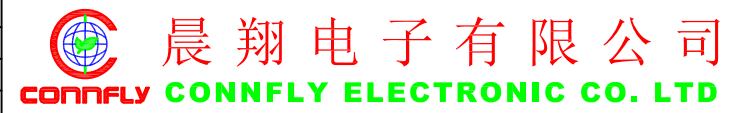
**Right Angle**



GENERAL TOLERANCE		ANGLE TOLERANCE	
X.	±0.60	X.	±5°
.X	±0.38	.X	±3°
.XX	±0.25	.XX	±2°

PROJECTION		TITLE	P.C.B CONNECTOR 3.96mm VH
UNITS	mm	SHEET	A4
SHEET SIZE	A4	SERIES	DS1073 SERIES

DRAWING TYPE	CUSTOMER		
SCALE	1:1	SHEET	1 OF 1
DRAWING NO.	C-DS1073-XXXXX-E		



1 2 3 4 5 6 7 8