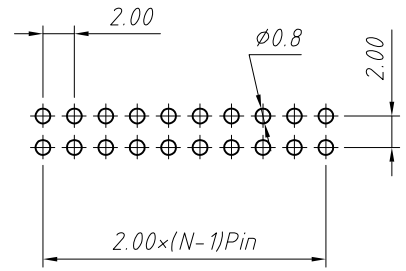
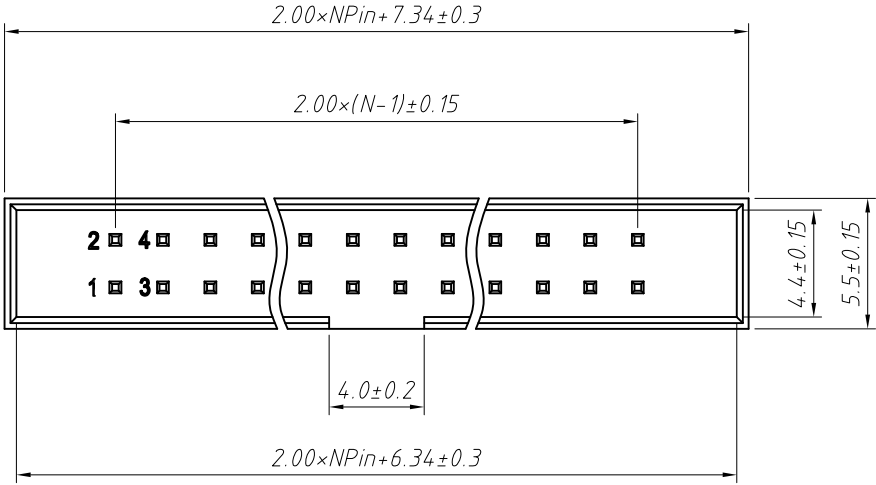


1
RoHS Compliance

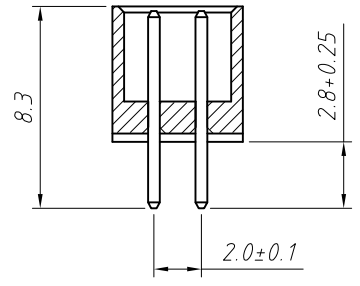
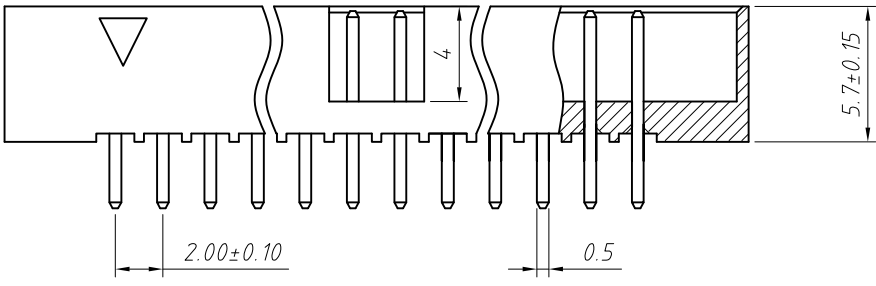


Recommended P.C.B Layout (Top Side)
(PCB BOARD TOLERANCE ± 0.05)

Material:
Housing: PA6T, UL94V-0
Contact: Brass
Plating: Gold plated

Electrical Characteristics:
Rated Current: 1.5AMP
Contact Resistance: $20m\Omega$ Max
Withstand Voltage: 400V AC/DC
Insulator Resistance: $800M\Omega$ Min

Mechanical
Operating Temperature: $-40^\circ\text{C} \sim +105^\circ\text{C}$
Max. Processing Temp: 230°C for 30-60 seconds (260°C for 10 seconds)



Order Information:
L-KLS1-202B-XX-S-B-□
L: RoHS
Box Header Series
202B: 2.00mm Pitch
XX-No. of 06 ~ 64 pin
Type: S-Straight pin
R-Right Angle Pin T-SMT
Color: B-Black G-Gray
Material: NONE=PA6T
A=PBT C=LCP

ANGLE TOLERANCE	PROJECTION	Description:	
$\pm 3^\circ$		2.00mm Pitch Box Header Connector	
GENERAL TOLERANCE	UNITS	mm	KLS P/N:
x.x ± 0.30	SHEET SIZE	A4	L-KLS1-202B-XX-S-B-□
x.xx ± 0.20	Draw:	Daniel	2018-07-10
x.xxx ± 0.10	Check:	Daniel	2018-07-10

