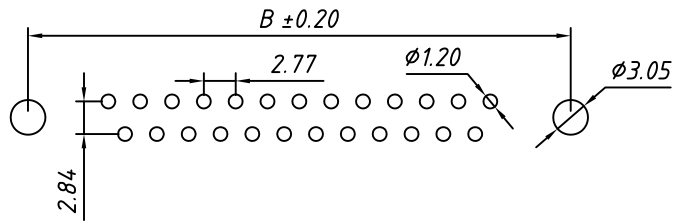
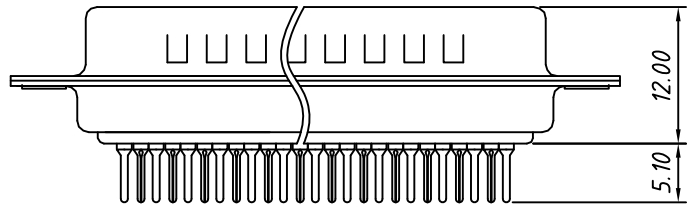
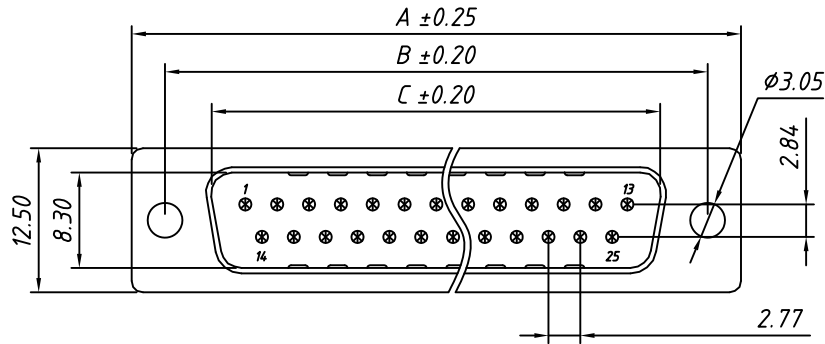


1 RoHS Compliant

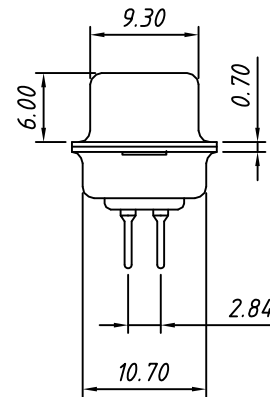


RECOMMENDED PCB LAYOUT
TOLERANCE: ±0.05mm

Number of Contacts	DIMENSION		
	A±0.25	B±0.20	C±0.20
09	30.81	24.99	16.92
15	39.14	33.32	25.25
25	53.04	47.04	38.96
37	69.32	63.50	55.42

Material:
Housing: PBT+30% Glass filled, UL94V-0
Contacts: Brass, Gold Plating or Gold Plating on Contact Area, Tin on Solder Tail.
Shell: Steel, Nickel Plating

Electrical Characteristics:
Current Rating: 5 AMP
Insulator Resistance: 1000MΩ Min. at DC 500V
Withstanding Voltage: 500V AC (rms) for 1 minute
Contact Resistance: 20mΩ Max. Initial
Operating Temperature: -40°C ~ +105°C



Call waiting force		
Contacts	Insertion	Withdraw
09M/09F	≤4.0kgf	≥1.8kgf
15M/15F	≤4.5kgf	≥2.0kgf
25M/25F	≤6.0kgf	≥2.5kgf
37M/37F	≤8.0kgf	≥3.5kgf

Order Information

L - KLS1 - 221 - XX - M - L
 RoHS _____
 D-SUB Connector, 2 Row Through Hole
 XX-No. of 09, 15, 25, 37, 50 pins
 Connector type: M-Male F-Female
 Housing Color: _____
 B-Black L-Blue W-White

GENERAL TOLERANCE	PROJECTION		Description:
X. ±0.30	UNITS	mm	D-SUB Connector, Panel Mount, Through Hole, Male
.X ±0.25	SCALE	1:1	
.XX ±0.20	Draw by:	Daniel	KLS P/N: L-KLS1-221-XX-M-L
ANGLE TOLERANCE	Check by:	Daniel	NingBo KLS ELECTRONIC CO., L TD.
X. ±3°	Date	2018-03-01	
.X ±2°	SHEET	1 OF 1	
.XX ±1°			