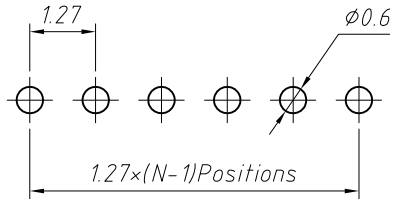
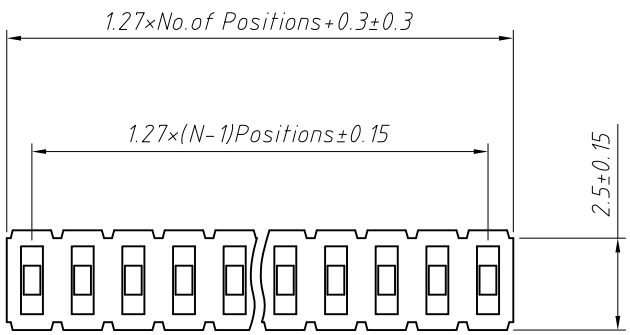


1  
RoHS Compliance

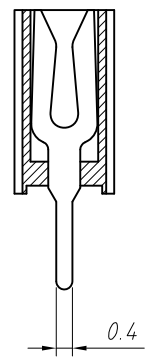
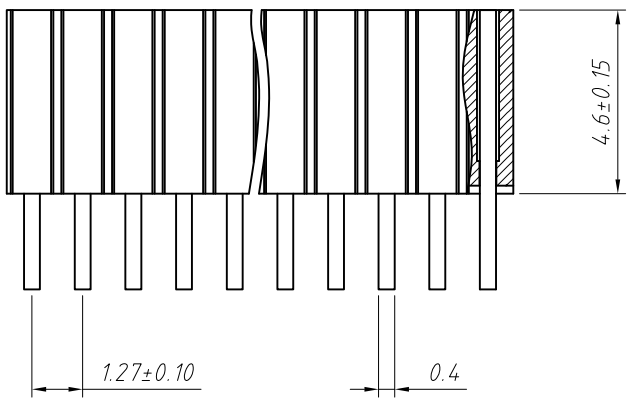


Recommended P.C.B Layout (Top Side)  
(PCB BOARD TOLERANCE ±0.05)

Material:  
Standard: PA6T/LCP  
Contact: Brass  
Plating: Au or Sn Over 50u" Ni  
Insulator: Polyester, UL94V-0

Electrical Characteristics:  
Rated Current: 1.0AMP  
Contact Resistance: 20mΩ Max  
Withstand Voltage: 500V AC/DC  
Insulator Resistance: 1000MΩ Min

Mechanical  
Operating Temperature: -40°C ~ +105°C  
Max. Processing Temp: 230°C for 30-60 seconds (260°C for 10 seconds)



Order Information:  
L-KLS1-208C-4.6-1-XX-S-B  
L: RoHS  
Female Header  
Series 208C: 1.27mm  
Plastics Height: 4.6mm  
Per Row: Single layer  
Pin: No. of Pins (1x40)  
Type: Straight Pin  
Material: B=PA6T C=LCP

ANGLE TOLERANCE	PROJECTION	Description:	1.27x4.6mm Female Header Single layer, Straight Pin, 1xN Pin
±3°			
GENERAL TOLERANCE	UNITS	mm	KLS P/N:
x.x ±0.30	SHEET SIZE	A4	L-KLS1-208C-4.6-1-XX-S-B
x.xx ±0.20	Draw:	Daniel	2018-07-10
x.xxx ±0.10	Check:	Daniel	2018-07-10

