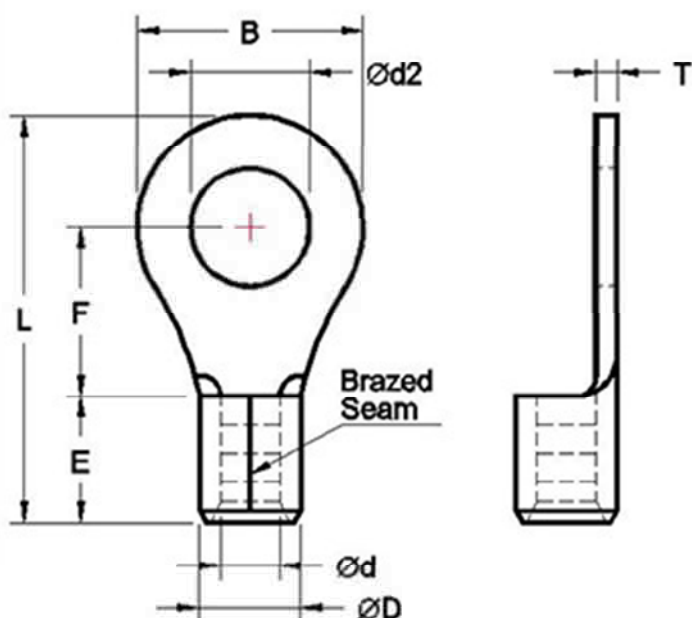


КОЛЬЦЕВЫЕ (О-типа) НЕИЗОЛИРОВАННЫЕ КЛЕММЫ

Предназначены для оконцевания (опрессовкой) многожильных медных проводов и последующего крепежа наконечников к клеммам электрического оборудования на основе винтовой фиксации.



WIRE RANGE A.W.G mm ²	ITEM NO.	Stud Size	Dimensions (mm)							
		Metric	Ød2	B	F	L	E	Ød	ØD	T
22-16 A.W.G. 0.5-1.5 mm ²	R1-3NB	3.0	3.2	5.5	4.8	12.5	5.0	1.7	3.4	0.75
	R1-3.5SNB	3.5	3.7	5.5	4.8	12.5				
	R1-3.5NB	3.5	3.7	6.6	6.3	14.6				
	R1-4SNB	4.0	4.3	6.6	6.3	14.6				
	R1-4NB	4.0	4.3	8.0	7.0	16.0				
	R1-5NB	5.0	5.3	8.0	7.0	16.0				
	R1-6NB	6.0	6.4	11.6	11.1	21.9				
	R1-8NB	8.0	8.4	11.6	11.1	21.9				
	R1-10NB	10.0	10.5	13.5	13.9	25.7				
	R1-12NB	12.0	13.3	19.0	16.0	30.5				

WIRE RANGE A.W.G mm ²	ITEM NO.	Stud Size	Dimensions (mm)							
		Metric	Ød2	B	F	L	E	Ød	ØD	T
16-14 A.W.G. 1.5-2.5 mm ²	R2-3NB	3.0	3.2	6.6	4.3	12.6	5.0	2.3	4.1	0.8
	R2-3.5SNB	3.5	3.7	6.6	4.3	12.6				
	R2-3.5NB	3.5	3.7	6.6	6.3	14.6				
	R2-4SNB	4.0	4.3	6.6	6.3	14.6				
	R2-4NB	4.0	4.3	8.5	7.8	17.0				
	R2-5SNB	5.0	5.3	8.5	7.8	17.0				
	R2-5NB	5.0	5.3	9.5	7.3	17.0				
	R2-6NB	6.0	6.4	12.0	11.0	22.0				
	R2-8NB	8.0	8.4	12.0	11.0	22.0				
	R2-10NB	10.0	10.5	13.6	13.9	25.7				
	R2-12NB	12.0	13.3	19.0	16.0	30.5				
14-12 A.W.G. 2.5-4 mm ²	R3-4NB	4.0	4.3	8.0	7.8	17.8	6.0	2.9	5.1	1.0
	R3-5NB	5.0	5.3	8.0	7.8	17.8				
	R3-5LNB	5.0	5.3	12.0	9.4	21.4				
	R3-6NB	6.0	6.4	12.0	9.4	21.4				
	R3-8NB	8.0	8.4	15.0	13.3	26.8				
	R3-10NB	10.0	10.5	15.0	13.3	26.8				
	R3-12NB	12.0	13.0	19.2	16.0	31.6				

WIRE RANGE A.W.G mm ²	ITEM NO.	Stud Size	Dimensions (mm)							
		Metric	Ød2	B	F	L	E	Ød	ØD	T
12-10 A.W.G 4-6 mm ²	R5-3.5NB	3.5	3.7	7.2	5.9	15.5	6.0	3.4	5.6	1.0
	R5-4SNB	4.0	4.3	7.2	5.9	15.5				
	R5-4NB	4.0	4.3	9.5	8.3	19.0				
	R5-5NB	5.0	5.3	9.5	8.3	19.0				
	R5-6NB	6.0	6.4	12.0	10.5	22.5				
	R5-8NB	8.0	8.4	15.0	13.7	27.2				
	R5-10NB	10.0	10.5	15.0	13.7	27.2				
	R5-12NB	12.0	13.0	19.2	16.0	31.6				

WIRE RANGE A.W.G mm ²	ITEM NO.	Stud Size	Dimensions (mm)							
		Metric	Ød2	B	F	L	E	Ød	ØD	T
8 A.W.G. 8 mm ²	R8-3.5NB	3.5	3.7	8.0	9.3	23.8	8.5	4.5	7.2	1.2
	R8-4SNB	4.0	4.3	8.0	9.3	23.8				
	R8-4NB	4.0	4.3	12.0	9.3	23.8				
	R8-5SNB	5.0	5.3	9.0	9.3	23.8				
	R8-5NB	5.0	5.3	12.0	9.3	23.8				
	R8-5LNB	5.0	5.3	15.0	13.8	29.8				
	R8-6NB	6.0	6.4	12.0	9.3	23.8				
	R8-6LNB	6.0	6.4	15.0	13.8	29.8				
	R8-8NB	8.0	8.4	15.0	13.8	29.8				
	R8-10NB	10.0	10.5	15.0	13.8	29.8				
	R8-12NB	12.0	13.0	20.0	15.0	33.5				

WIRE RANGE A.W.G mm ²	ITEM NO.	Stud Size	Dimensions (mm)							
		Metric	Ød2	B	F	L	E	Ød	ØD	T
6 A.W.G. 14 mm ²	R14-4NB	4.0	4.3	12.0	13.3	29.8	10.5	5.8	9.0	1.5
	R14-5NB	5.0	5.3	12.0	13.3	29.8				
	R14-6NB	6.0	6.4	12.0	13.3	29.8				
	R14-6LNB	6.0	6.4	16.0	14.5	33.0				
	R14-8NB	8.0	8.4	16.0	14.5	33.0				
	R14-10NB	10.0	10.5	16.0	14.5	33.0				
	R14-12NB	12.0	13.0	22.0	19.5	41.0				
4 A.W.G. 22 mm ²	R22-5SNB	5.0	5.3	12.0	12.0	30.0	12.0	7.7	11.5	1.8
	R22-5NB	5.0	5.3	16.5	13.5	33.7				
	R22-6SNB	6.0	6.4	12.0	12.0	30.0				
	R22-6NB	6.0	6.4	16.5	13.5	33.7				
	R22-8SNB	8.0	8.4	12.0	12.0	30.0				
	R22-8NB	8.0	8.4	16.5	13.5	33.7				
	R22-10SNB	10.0	10.5	16.5	13.5	33.7				