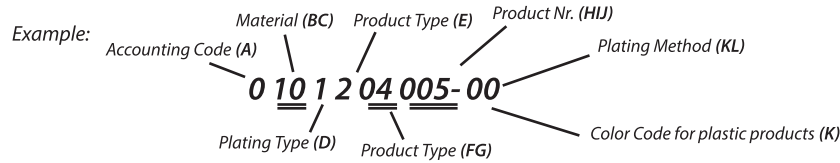


## The explanations of the digits are shown below

### KEY PRODUCT CODES

The products codes are expressed by a 10-digit number as shown in the example below. The explanations of the digits are shown below.



### EXPLANATIONS

**A- Accounting Department Code:** Code for our accounting department.

#### BC- Material:

- 10- Brass (CuZn30)
- 11- Brass (CuZn36)
- 12- Brass (CuZn37)
- 20- Copper (E-Cu)
- 21- CuNiSi
- 22- CuFe
- 25- German Silver (CuNiZn)
- 30- Phospor Bronze (CuSn6)
- 31- Phospor Bronze (CuSn4)
- 32- Phospor Bronze+Stainless Steel (CuSn4+X10CrNi)
- 33- Phospor Bronze+Stainless Steel (CuSn6+X10CrNi)
- 34- CuSn0,1
- 41- Stainless Steel (X5CrNi)
- 50- DC
- 70- Plastic (PA6.6)-Flammability Class V2
- 72- Plastik (PVC)
- 73- Plastik (PE-I 20)
- 78- Plastic (PA6)-Flammability Class V2 V2-NF
- 79- PBT
- 83- PA6.6 (GF) %20
- 84- PA6.6 (GF) %13
- 90- PA6.6 (GF) %50
- 93- PPS (GF) %65

#### FG- Product Type:

- 01- Faston Type Tabs
- 02- Tubular Type Plug Terminals
- 03- Special Faston Tabs
- 04- Faston Type Terminals
- 05- Tubular Type Sockets
- 06- Special Type Terminals
- 07- Ring Terminal
- 08- Spade Tongue Terminal
- 09- Ring Tongue Terminal
- 10- End Splices
- 11- Splices with Insulation Barrel
- 12- Hat-Mate
- 40- Terminal Housing (Male)
- 41- Terminal Housing (Female)
- 42- Terminal Sleeves
- 43- Sleeved Faston Tabs
- 44- PCB Connector
- 80- Other Product

#### D- Plating Type:

- 0-Unplated
- 1- Tin Plated Bright
- 2- Nickel Plated
- 3- Silver Plated
- 4- Copper+Nickel Plated
- 5- Copper Plated
- 6- Tin Plated Matte
- 7- Other
- 8- Nickel+Tin Plated Bright
- 9- Nickel+Tin Plated Matte

#### KL- Plating Method:

- 00- Pre-Tin

#### K- Color Code (For Plastics)

- 0- Natural
- 1- White
- 2- Black
- 3- Red
- 4- Yellow
- 5- Green
- 6- Blue
- 7- Grey
- 8- Brown
- 9- Purple
- 10- Orange
- 11- Copper Tone

#### E- Product Type:

- 1- Reel
- 2- Single
- 3- Semi-finished Product
- 4- Reverse Winding

#### HIJ Product Number:

- 001
- 002
- 003
- ....
- ....

### KEY TO TERMINAL DESCRIPTION

Terminals are described as shown in the example below. The explanations of the digits are shown below.

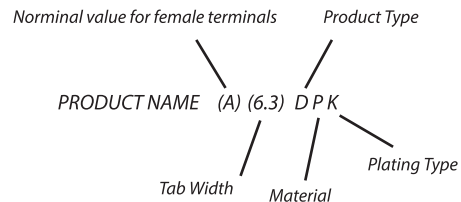
Example: For 6.3 Faston type receptacles:

#### Explanations:

(A) - Nominal value for female terminals

| NOMINAL VALUE FOR FEMALE TERMINALS |      |      |        |
|------------------------------------|------|------|--------|
| CODE                               | NOM. | MALE | FEMALE |
| (A)                                | 0.50 | 0.50 | 0.40   |
| (B)                                | 0.80 | 0.80 | 0.70   |
| (C)                                | 0.55 | 0.80 | 0.55   |
| (D)                                | 0.30 | 0.40 | 0.30   |
| (E)                                | 0.60 | 0.80 | 0.60   |
| (F)                                | 0.70 | 0.80 | 0.70   |
| (G)                                | 0.75 | 0.85 | 0.75   |
| (H)                                | 0.65 | 0.80 | 0.65   |
| (S)                                | 0.80 | 0.85 | 0.80   |
| (N)                                | 0.25 | 0.50 | 0.25   |
| (P)                                | 0.50 | 0.50 | 0.50   |
| (J)                                | 0.90 | 1.0  | 0.90   |

(6.3) - The value in paranthesis is; Tab width for faston terminals (mm)  
Nominal value for faston type receptacles (mm)

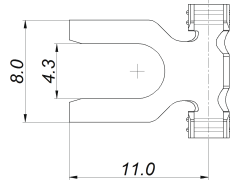


**D- Product Type:** D-Single R-Reel Y-Semi-finished Product

**P- Material:** P-Brass B-Copper M-Stainless-finished Product  
F- Phosphor Bronze C-DC A-German Silver D-CuFe

**K- Plating Type:** K- Tin Plated N-Nickel Plated  
G-Silver Plated Z-Zinc Plated B-Copper Plated

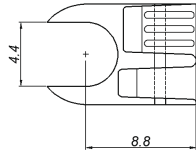
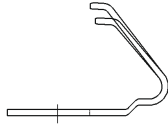
## Spade Tongue Terminals



| Ürün Adı<br>Product Name | Ürün Kodu<br>Product Code | Malzeme<br>Kalınlığı (mm)<br>Material<br>Thickness (mm) | Kablo Kesiti<br>(mm <sup>2</sup> )<br>Wire Size<br>(mm <sup>2</sup> ) | Form | Malzeme / Material |      |    | Adet / SPQ   |               |
|--------------------------|---------------------------|---|---|------|--------------------|------|----|--------------|---------------|
|                          |                           |   |   |      | CuZn               | CuSn | DC | Rulo / Chain | Dökme / Loose |
| SKNC7                    | 0XXXX08009                | 0,45  | 0,20-0,50   | -    | ●                  | -    | -  | 10.000       | -             |

- Standard Part
- \* Available on request

| Kaplama / Plating |    |    |
|-------------------|----|----|
| Sn                | Ni | Ag |
| ✓                 | ✓  | ✓  |



| Ürün Adı<br>Product Name | Ürün Kodu<br>Product Code | Malzeme<br>Kalınlığı (mm)<br>Material<br>Thickness (mm) | Kablo Kesiti<br>(mm <sup>2</sup> )<br>Wire Size<br>(mm <sup>2</sup> ) | Form | Malzeme / Material |      |    | Adet / SPQ   |               |
|--------------------------|---------------------------|---|---|------|--------------------|------|----|--------------|---------------|
|                          |                           |   |   |      | CuZn               | CuSn | DC | Rulo / Chain | Dökme / Loose |
| SM5C                     | 0XXXX08001                | 0,50  | 2,00-4,00   | -    | ●                  | -    | -  | 4.000        | -             |

- Standard Part
- \* Available on request

| Kaplama / Plating |    |    |
|-------------------|----|----|
| Sn                | Ni | Ag |
| ✓                 | ✓  | ✓  |