


Ducon 2.8 Male Unsealed Tin Plating Tang Terminal Assembly, Cable Range 1.50 - 2.50 mm²

Part # 12147301



Part #	12147301
Description	Ducon 2.8 Male Unsealed Tin Plating Tang Terminal Assembly, Cable Range 1.50 - 2.50 mm ²
Product Type	Terminal
Status	 Active
Terminal Family	DUCON
Series	2.8
Gender	Male
Sealable	Unsealed
Material	Various (Assembly)
Plating	Tin
Temperature Range	-40 to 135
Voltage Drop	Less than 4.0

product: DELPHI PN 12147301
 material: CUNISI
 surface: F.SN3
 material thickness: 0,38 mm
 cross section [mm²]: 1,5 | 2,5

 strip length: 4,50 mm
 cable type: FLU142Y
 insulation \varnothing [mm]: 1,90 - 2,70
 seal:

**Uncontrolled
Copy**
For Information only!

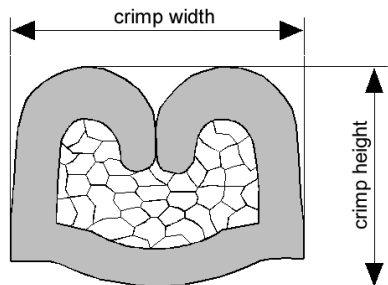
conductor dimension					crimp dimension [mm]					
cable type	cross sect. [mm ²]	struct. n x d [mm]	insul. diam. [mm]	tear-out force [N]	core		insulation			
					height \pm 0,05	width \pm 0,10	height \pm 0,10	width \pm 0,10	height \pm tol.	width \pm tol.
FLU142Y	1,5	19 x 0,33	2,00	200	1,70	2,85	2,80	3,60		
FLU142Y	2,5	19 x 0,41	2,60	250	1,90	2,90	3,10	3,65		

core:
 C-2.75-3.5-19
 DPN 10713702

insulation:
 IO-3.50-2.5-12
 DPN 10713871

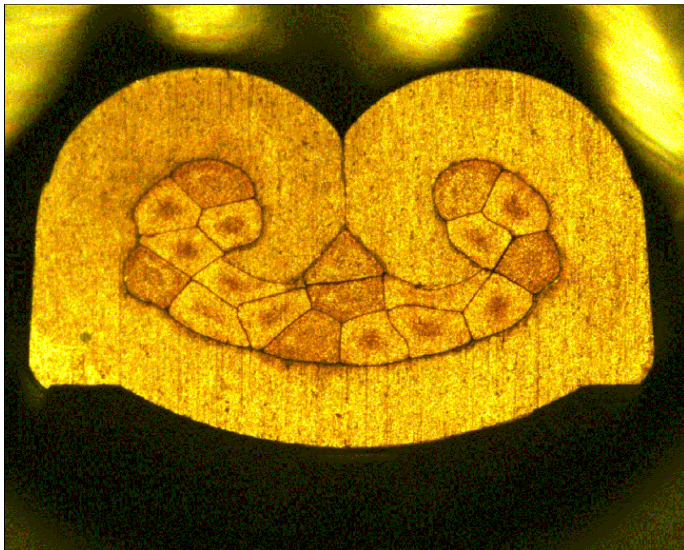
anvil:
 AS-2.75-3.50-7.7-3.0-0.4
 DPN 10713951

two piece anvil:
 AC-2.75-3.75
 DPN 10764131
 AI-3.50-3.4-0.4
 DPN 10806915



Downloaded from Datasheet.su

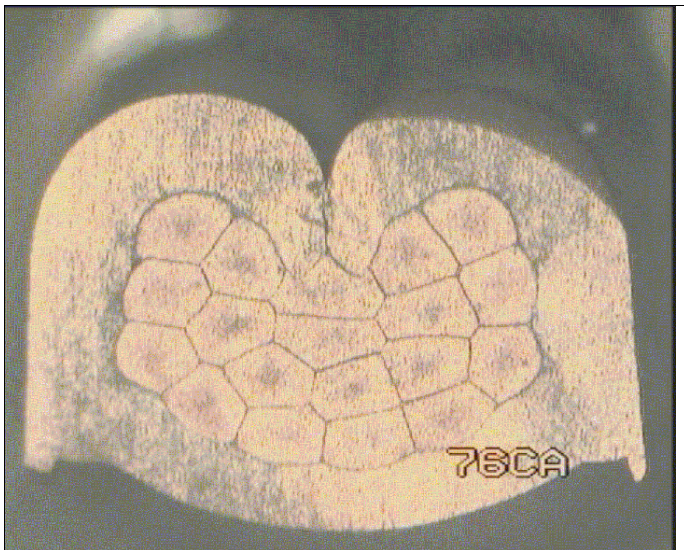
DELPHI PN 12147301



cable:
 $1,50 \text{ mm}^2 = 19 \times 0,33 \text{ mm}$

crimp height:
1,70 mm

crimp width:
2,85 mm



cable:
 $2,50 \text{ mm}^2 = 19 \times 0,41 \text{ mm}$

crimp height:
1,90 mm

crimp width:
2,90 mm